



Version 1.4
Brief User Guide

RawDiggerAA77hSLI00100NR2D.ARW

File: AA77hSLI00100NR2D.ARW Image 6024x4024 2126:1011-66x66 2369:2009

Camera: **SONY SLT-A77V**

R	0	4021	213.1	143.9	R	24	106	45.8	15.1	R:	109
G	3	4021	484.8	341.2	G	70	306	141.1	44.7	G:	208
B	2	4021	355.7	268.0	B	36	144	71.6	18.8	B:	149
G2	64	4021	487.0	342.9	G2	64	302	142.2	45.3	G2:	195

ISO Speed: **100** Back level: **128** Color matrix: **RGBG**

AA77hSLI00100NR2D.ARW Sel-484-1969-1049x724 Histogram

Statistics for histograms:
 - Red: Min: 12, Max: 633, Pixels: 190k, Values: 614
 - Green: Min: 21, Max: 1543, Pixels: 189k, Values: 1017
 - Blue: Min: 12, Max: 1174, Pixels: 189k, Values: 908

Samples

ID	Rmin	Ravg	Rmax	Rdev	Gmin	Gavg	Gmax	Gdev	Bmin	Bavg	Bmax	Bdev	G2min	G2avg	G2max	G2dev	
464:624-624x704	1	6	137.2	640	129.95	13	303.4	1535	302.45	9	219.6	1192	227.23	12	306.3	1551	305.3
246:1901-66x66	2	323	350.4	380	8.69	836	881.3	924	15.00	660	701.3	742	13.21	830	886.9	944	16.04
401:2456-66x66	3	274	299.8	332	9.29	706	756.6	812	17.45	531	597.9	641	15.38	702	758.5	816	17.46
1431:3286-66x66	4	36	137.1	444	67.28	85	285.9	1122	154.31	58	185.7	728	111.90	88	289.5	1068	155.7
2661:3771-66x66	5	203	221.4	244	7.06	496	540.0	579	12.67	372	408.4	445	10.49	504	541.4	578	12.60
3166:3756-66x66	6	191	217.3	240	7.07	461	534.7	582	14.05	345	406.4	440	11.49	456	536.3	576	13.79
3001:1796-66x66	7	21	31.9	47	5.02	52	78.0	111	11.34	43	63.2	91	9.12	51	78.7	115	11.37
2671:1231-66x66	8	71	134.2	269	35.88	47	91.1	344	46.96	30	72.6	318	52.34	47	93.3	368	49.33
2821:551-66x66	9	201	249.0	288	17.63	519	626.2	722	42.70	399	486.6	560	32.52	523	633.5	726	42.60
2256:641-66x66	10	18	51.6	115	17.70	36	153.5	322	59.46	26	75.7	146	24.77	35	154.8	311	59.95
2126:1011-66x66	11	24	45.8	106	15.10	70	141.1	306	44.65	36	71.6	144	18.84	64	142.2	302	45.27

Contents

What is RawDigger	3
RawDigger Editions feature table	5
System Requirements	6
Program Installation	7
Windows.....	7
Mac OS X	9
Program Activation	10
Manual Activation	11
Program Usage	14
Starting RawDigger.....	14
Main Program Window	15
Program Menu	22
RawDigger Histograms	24
Samples Table	28
Selection Grid: processing color targets	32
Raster Image Data Export	37
Processing of floating point data	39
Preferences	41
Display Options Tab.....	42
Data Processing Tab	46
Data Processing -> Vendor specific Tab	48
Histograms Tab.....	51
File Handling Tab.....	53
Misc. Options Tab.....	55
Over/Under Exposure tab	57
Support of non-standard cameras	58
Supported Cameras.....	60
Copyrights and Acknowledgments.....	88

What is RawDigger

RawDigger by **LibRaw, LLC**, is a tool to visualize and examine pure raw data as the camera has recorded it. In essence, it is a microscope of sorts that lets you drill down into raw data.

RawDigger doesn't alter the raw data in any way. RawDigger is not a raw convertor. Instead, it allows you to see the data that will be used by raw convertors.

RawDigger supports nearly all cameras that have raw capability. Support for new cameras is usually implemented within few weeks after raw samples become available.

Some unique RawDigger features:

- RawDigger displays the *real histogram of the raw data*, which greatly differs from the in-camera histogram and histograms presented by most of the raw convertors.
- *Overexposure (OE)* indicator will show you exactly what areas of the shot are blown out and in which color channel(s) it happened (best if used in channel view).
- RawDigger allows determining how exposure meter is calibrated and what raw level corresponds to the midpoint of in-camera histogram. That is, RawDigger lets you establish the headroom in highlights and obtain optimal exposures.
- For ETTR practitioners, RawDigger makes it very simple to compare raw histogram to in-camera histogram and account for the difference, making the exposures as much "to the right" as possible.
- RawDigger helps determining the raw level at which the overexposure "blinkies" start on the camera LCD and to know how much headroom is still available after the blinkies start showing.
- If the shadows look blotchy, colorless, or details in shadows are poorly resolved you will be able to determine how much they are underexposed and set *Underexposure (UE)* indicator in RawDigger accordingly.
- RawDigger is a useful tool for examining how the relative per-channel underexposure depends on the color of light.
- RawDigger is more precise than any exposure meter for the purpose of evaluation of the uniformity of fill light and reproduction light setups (in terms of the evenness of both color balance and luminosity across the background).
- For studio photography RawDigger helps establishing the proper light filtration to achieve the cleanest possible shadows on the shots.
- Landscape photographers may want to use RawDigger to determine the effect of the filters on the lens, to check neutrality of polarizing and neutral density filters and, possibly, to select color correction and color compensation filters to use in different light.
- RawDigger can be used to check the amount of vignetting caused by the lens and the sensor.
- RawDigger helps determine the idiosyncrasies of both camera and raw convertor by providing a true view into the raw data and comparing it to the results obtained through raw conversion.

Some of the more advanced features, depending on the RawDigger edition, include:

- RAW data export as TIFF.

RawDigger User Guide

- Plot and save per channel raw data histograms for both the entire file and for an arbitrary rectangular area of the file (*selection*). The histograms can be saved as graphics or as a table for further external processing.
- Calculate the statistics per channel (*minimum, maximum, average, root-mean-square deviation*) for the entire file and for an arbitrary rectangular selection.
- Calculate the statistics per channel and save the results in a processing-friendly form - CSV, CGATS (for an arbitrary number of rectangular areas of the file).
- Save the compression curves of raw files in a tabulated form (for cameras and raw data formats where such curves are used).

RawDigger is available in several editions:

- **Exposure Edition** is for everyday use and is intended to help those who are serious about extracting the maximum quality from the camera to get precise exposures.
Exposure Edition displays RAW data in all modes (*RGB, RAW Composite, and RAW per channel*), indicates over- and underexposed areas, displays RAW histogram, image statistics, as well as statistics and histogram for selected area.
- **Research Edition** is meant for camera/sensor evaluation and statistical analysis of raw data. It is suitable for a wide range of tasks, starting from personal use and preparing reviews and all the way to programming RAW data processing.
Research Edition adds TIFF export, multiple selected areas via samples, tables of sampled data; statistics and histograms over multiple samples, exporting sampled data as CSV and CGATS.
- **Profile Edition** is for those who need to create sensor calibration data, linearization data, or device data for color profiling.

Profile Edition adds selection grids for faster processing of step wedges and color targets, as well as for calculating non-uniformity maps. Profile Edition allows applying white balance, normalization, equalization (Flat Field), and filtering of outlying values before data export.

RawDigger Editions feature table

	RawDigger Exposure Edition	RawDigger Research Edition	RawDigger Profile Edition
User Groups and suggested usage	General photography: exposure evaluation, exposure meter calibration, verification of the light evenness (brightness and white balance consistency)	Camera and RAW data analysis (evaluating cameras, preparing camera reviews, programming RAW data processing)	Creating calibration, linearization tables; preparing data for color profiling
Reads all supported RAW formats	+	+	+
Display of RAW data in all modes (RGB, RAW Composite, and RAW per channel)	+	+	+
Display of Over- and UnderExposed areas	+	+	+
Display of the histogram and statistics for the entire file	+	+	+
Statistics and histogram for one selected area	+	+	+
TIFF export	-	+	+
Multiple selected areas (samples and table of sampled data): statistics, histogram, and export to CSV and CGATS formats	-	+	+
Filtering of the data to be exported: white balance, normalization, equalization (Flat Field), filtering of outlying values.	-	-	+
Selection grids (for fast processing of color targets and step wedges)	-	-	+

System Requirements

Windows: Currently, the program requires a computer with Windows (XP SP2+, Vista, 7), 32 or 64-bit, 1GB memory, CPU supporting SSE2 or higher (Intel Pentium 4 or newer). Screen resolution should be 1024x768 or more.

Mac OS X: Intel Mac running Mac OS X 10.5 or newer. The program may work under 10.4, but this has not been tested. Both 32- and 64-bit systems are supported.

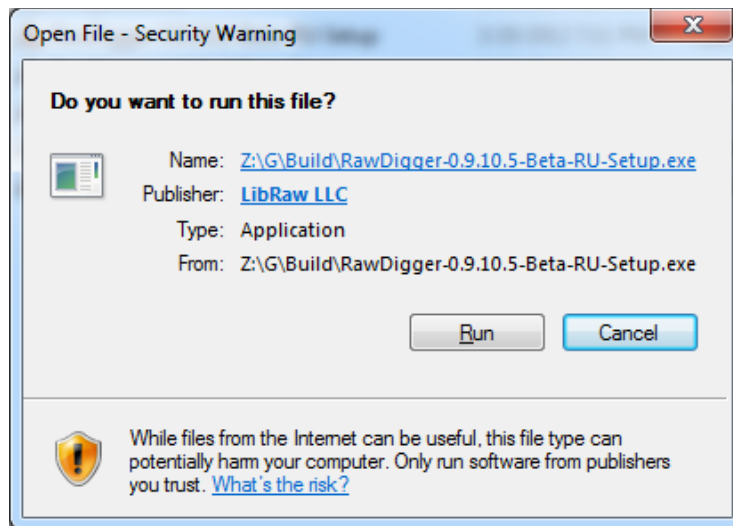
Linux: Currently, users report that one can use Wine to run RawDigger under OS X and Linux (configurations reported as tested are OS X 10.6.8 and Wine-1.2.3; Wine (1.3.37-0ubuntu1~ppa1~lucid1) and Debian testing.

Program Installation

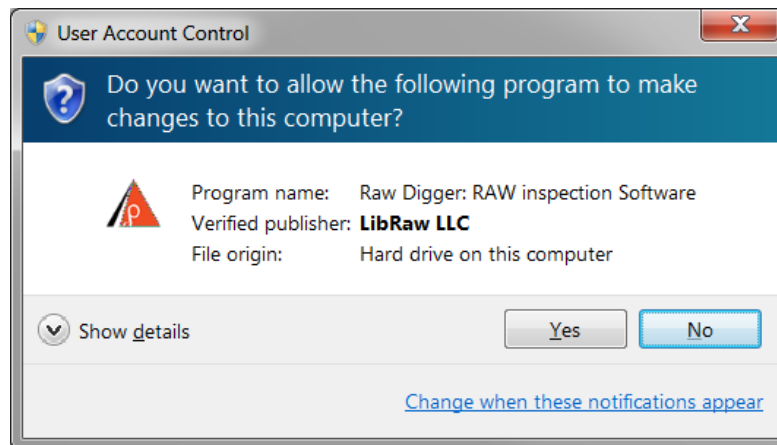
Windows

The program is installed by running the executable file of the distribution package (**RawDigger-1.0.0.xxx--Setup.exe**)

If you downloaded RawDigger from our site on the first program launch, current versions of Windows will display the following security warning:

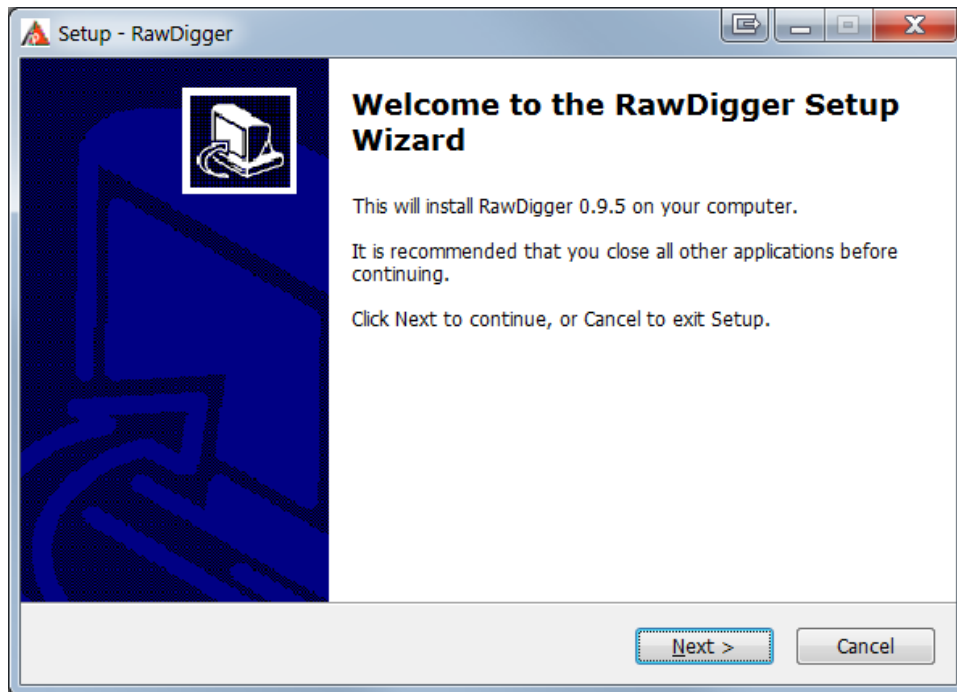


After the “Run” button is pressed, the UAC (Windows User Access Control) system will display a warning once again:



Both dialogs allow you to verify that the setup program is signed with unique LibRaw LLC electronic signature.

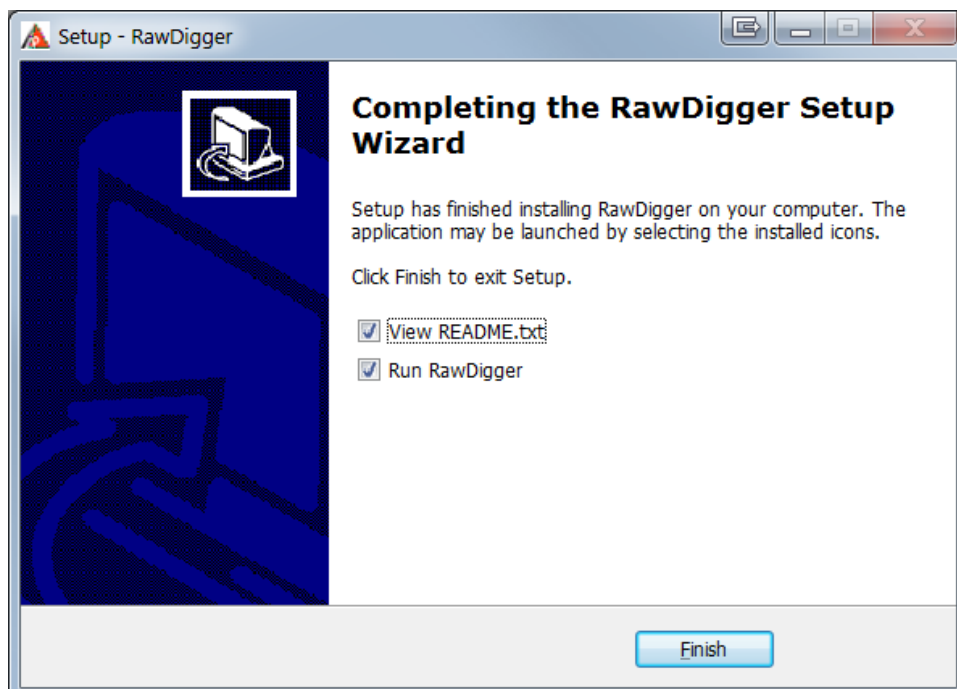
To proceed with the installation, you must agree to the dialog above, and the usual Setup Wizard will be launched:



At the next screens of Setup Wizard:

1. The User License is displayed
2. An installation folder is suggested; a different folder may be selected by the user
3. Creating a Group in the Programs menu is suggested
4. A list of possible additional actions is shown: add icon to the desktop, add icon to the Quick Launch menu

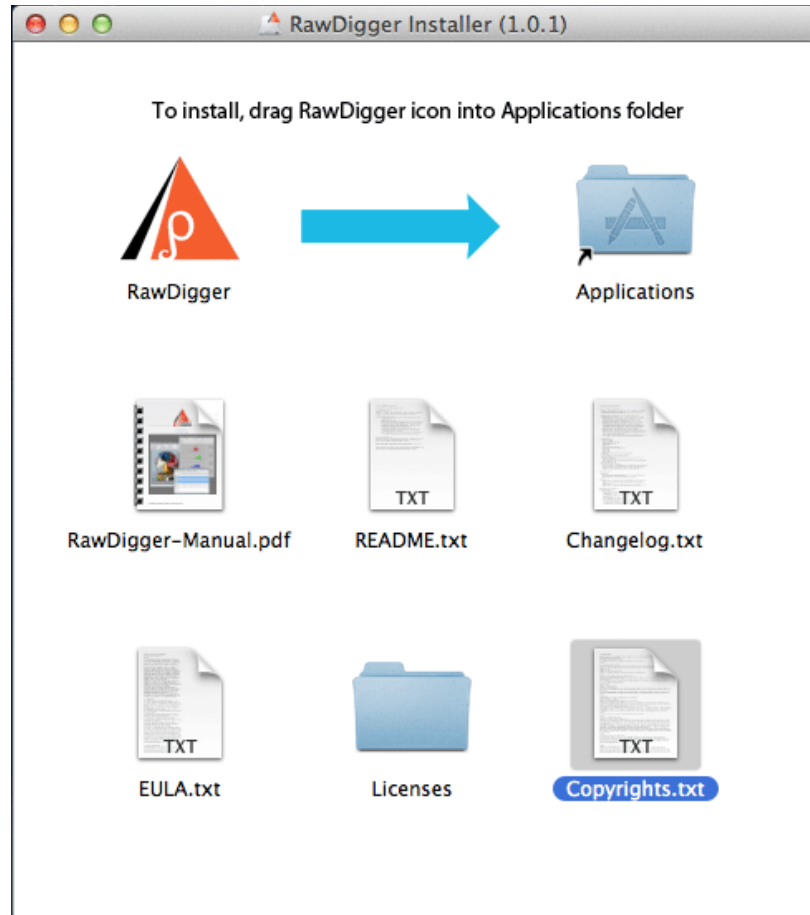
Afterwards, the installation takes place. Upon completion, the following screen appears:



In case of any errors during installation, please post to the technical support forum at www.rawdigger.com/forum (English or Russian languages are OK).

Mac OS X

Double click on RawDigger-1.x.x.dmg to mount the RawDigger disk image you've downloaded. The content of the disk image will appear like this:



Drag RawDigger icon onto the Applications icon. The program will be copied to Applications folder and ready to run.

Other items contained in the disk image are:

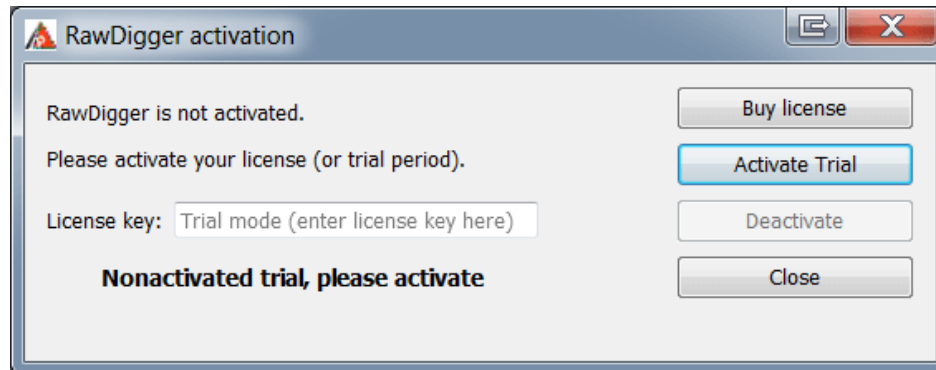
- RawDigger Manual (RawDigger-manual.pdf)
- Brief description (README.txt) and Changelog (Changelog.txt)
- End-User License Agreement (EULA.txt), Copyright Information (Copyrights.txt), Licenses and Copyrights for libraries and components used in RawDigger (folder Licenses).

Program Activation

During the first launch RawDigger will display a splash screen suggesting the activation of the trial version



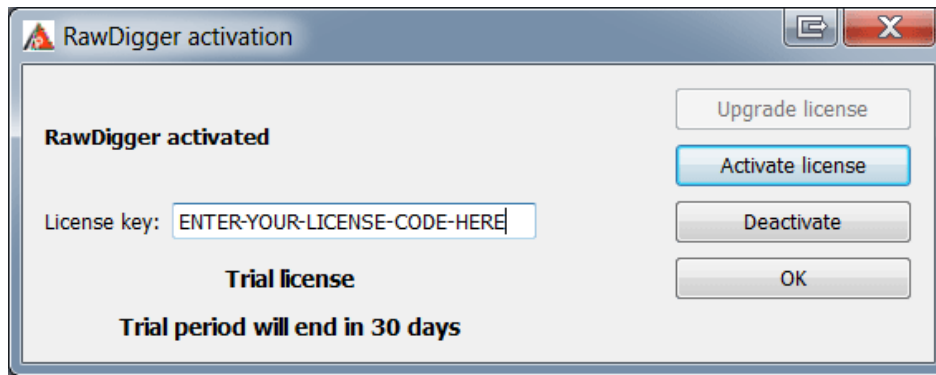
Next, an activation dialog will be displayed:



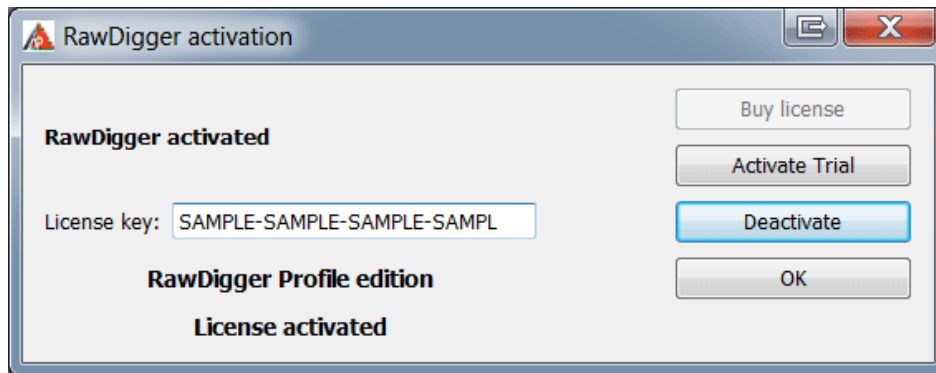
After the Activate Trial button is clicked, the program will be activated in trial mode for 30 days. During this period, all RawDigger features will be available.

To use RawDigger after the trial period, the user will need to obtain a full license for the RawDigger edition of his or her choice.

To obtain the license, please click the "Buy License" button or open www.rawdigger.com/purchase in your browser. As a result of the transaction, you will be provided with the license key (online and as a separate email). This license key should be entered into the License Key field of the activation dialog, which is also available through **Menu-Help-Purchase/Activate**):



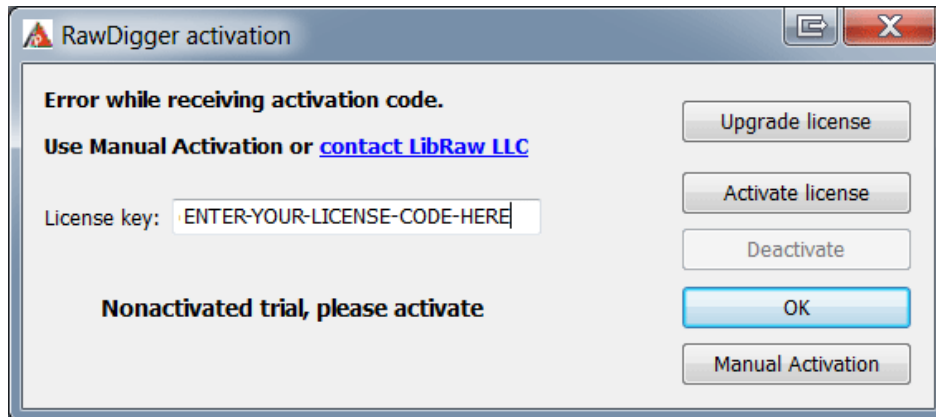
After the license key is entered, please click **Activate license** button. The license will be activated and you will be able to continue using the program.
The Help-Purchase/Activate menu item will now be renamed to Help-Registration data, and the respective dialog will show your registration data:



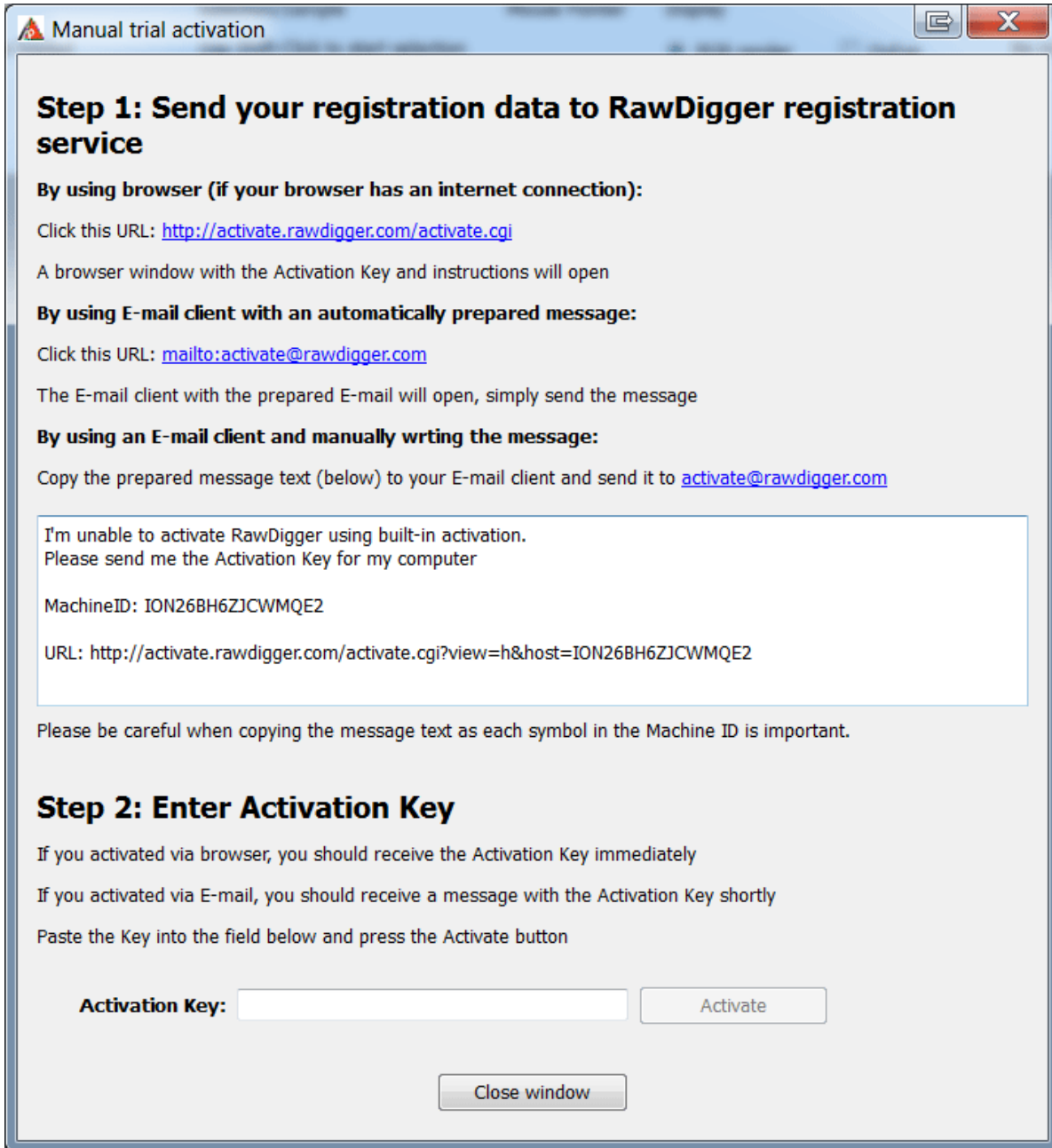
To complete the activation (of both the trial and the fully licensed version) the program needs a one-time access to the Internet. If you cannot grant the appropriate Internet access permissions, you can activate the program manually.

Manual Activation

If the program fails to connect with the activation server, you will see a pop up alert, with a «Manual Activation» button on the bottom right of the notification window.



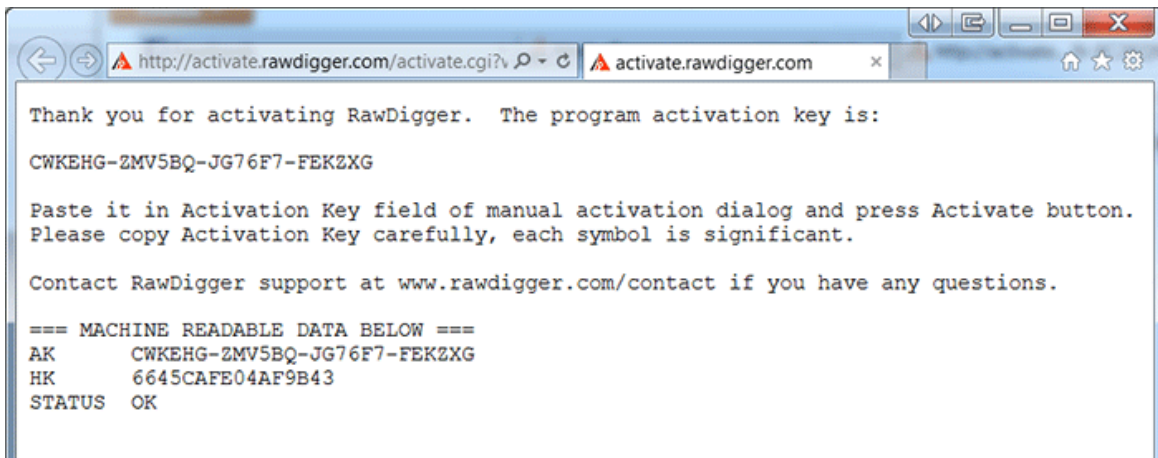
After clicking the «Manual Activation» button, a «Manual Trial Activation» window will pop up:



Depending on your Internet access, you can use one of the 3 ways to obtain the activation code:

By using browser (if your browser has an internet connection) – use this if your browser can connect to the Internet.

Simply click this url: <http://activate.rawdigger.com/activate.cgi> and you will see a browser window pop up with your unique activation key:

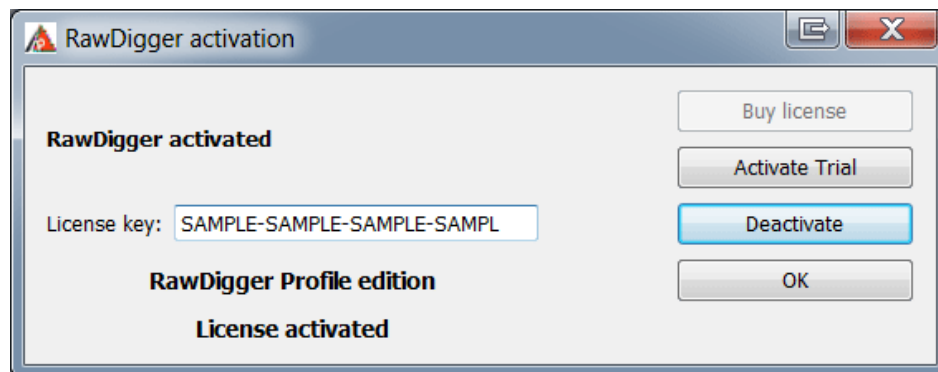


By using E-mail client with an automatically prepared message – click the <mailto:activate@rawdigger.com> link and your mail client will create a new pre-populated email to activate@rawdigger.com. You will only need to click send.

By using an E-mail client and manually writing the message – you can send an email to activate@rawdigger.com using the text in the window below (I'm unable to activate...»
If you choose to obtain the activation key via email, you will receive a reply email with the text identical to that which you would see in the web browser (the activation key, however, will be different.)

You can then use the Activation Key (from the browser or email) and enter it into the Activation Key field (it is best to use Copy-Paste, as every character of the key is important) and press «Activate.»

After clicking the «Close window» button, the window will close and the RawDigger activation window will display the registration status (as well as the edition you are using.)



Program Usage

Starting RawDigger

Windows

To start RawDigger, double-click its icon on the Desktop, or use the Windows Start menu

If the program is started from the command line, the first argument is interpreted as a name of the raw file to open. Consequently, if an icon of a raw file is dragged onto the RawDigger program icon the program will start and open this raw file.

If “single instance” mode is in effect (see Preferences below) and RawDigger is already running, starting a new RawDigger process with a file name to open as a command line parameter will cause the file to be opened by the already running instance.

To open a new RawDigger instance start RawDigger with `-newinstance filename` parameter, such as **RawDigger -newinstance filename**

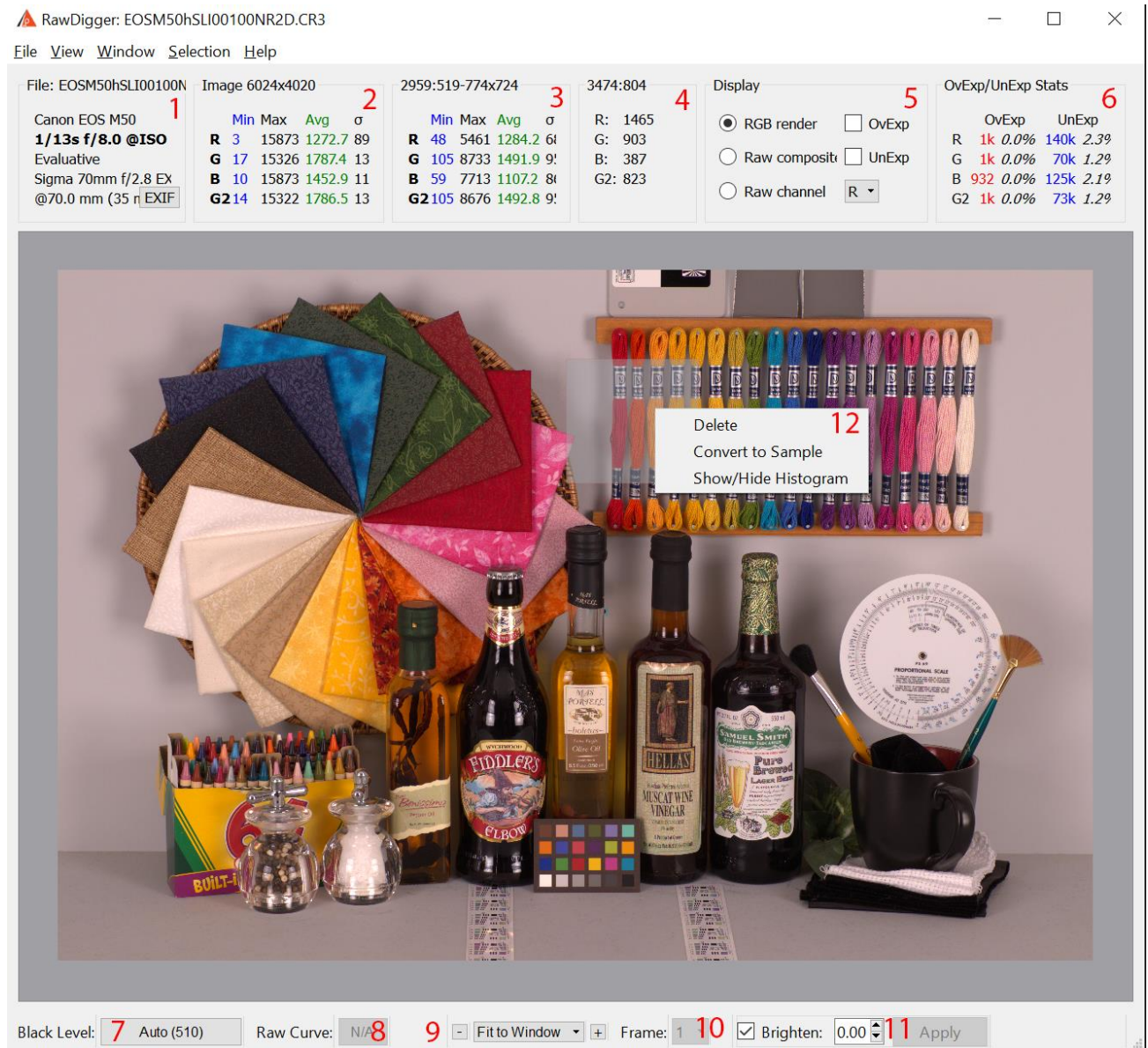
This will cause the new window to open even while in “single instance” mode.

Mac OS X

To start RawDigger, double-click its icon or drag a raw file icon onto the RawDigger icon.

Main Program Window

The main window of the program shows the name of the current (opened via menu command File->Open) raw file, its metadata and some statistical data. The file view mode is also selected in the main window.



The main program window displaying an opened raw file. Information blocks and controls are marked with digits in red.

1. File metadata

This window displays:

- The file name (as a window caption)
- Camera make and model
- Shutter speed, aperture, ISO sensitivity value
- Type of metering and exposure correction (if it was applied at the time of shooting)
- Lens type

- f. Focal length at which the shot was taken

Pressing “EXIF” button here, you can open a window displaying EXIF metadata for the file (see below for sample EXIF output window).

2. Raw data statistics per channel

Block header: image size in pixels. Block body: minimum, maximum, average (Avg) and root-mean-square deviation of pixel values in each color channel (σ).

3. Statistics per channel for the last selected area

Block header: coordinates of top left corner of selected area (X-Y-W-H). Block body: minimum, maximum, average and root-mean-square deviation of pixel values in each channel within the selected area.

4. Mouse pointer coordinates and the corresponding raw values

Block header: mouse pointer coordinates (X-Y). Block body: value in pixel or in 4 pixels under the pointer (which mode it is, 1 or 4 pixels, is set in the Preferences window; see Preferences section below).

5. Image view mode:

- **RGB render:** shows the RGB representation with the selected (see description of Preferences below) white balance. This mode is not available for cameras where the aspect ratio of a single pixel differs from 1 (for example, some Fuji cameras).
- **Raw Composite:** for an RGB(G)-Raw it is an RGB-image where the green channel is computed by averaging two green channels available in the raw file. For all raw file where the CFA is not RGB(G) (but rather CFA is of a different type, like CMYG, RGBE, etc.) a grayscale image is displayed (i.e. **Show RGBG in grayscale** setting /see below/ is forced **on** for such files).
- **Raw channel:** the selected channel is shown in the black-and-white mode.
- **OvExp:** switches overexposure indication On; the overexposed areas are highlighted in red.
- **UnExp:** switches underexposure indication On; the underexposed areas are highlighted in blue.

6. Statistics for over- and underexposed areas.

For each color channel the number and the percent (relative to the total number of pixels of the given color) of saturated and underexposed pixels is indicated.

7. Black level subtraction status display:

Current Black Level subtraction mode is indicated right on the button; **Auto** for the value reported by the camera, same as the level displayed in the block #1; **Off** when no black level subtraction is performed; **Manual and Value** if the same value of the black level is subtracted from all the channels; or **1-4 values in brackets** when black level is established individually for each of the channels. When this button is pressed the “Settings” dialog window is opened (more on “Settings” dialog see below), with the focus on the “Data Processing” pane.

8. Decompression using compression curve data from raw file:

The indication on the button can be **Normal** if the standard tone curve contained in the raw file is used; **Linear**, if a 45-degree straight line is used; or **N/A** if the particular file tone curve in raw is not applicable. When this button is pressed the “Settings” dialog window is opened (more on “Settings” dialog see below), with the focus on the “Data Processing” pane.

9. Image zoom

The + and – buttons change the scale, and the Fit To Window pull-down menu can be used to select the scale from list.

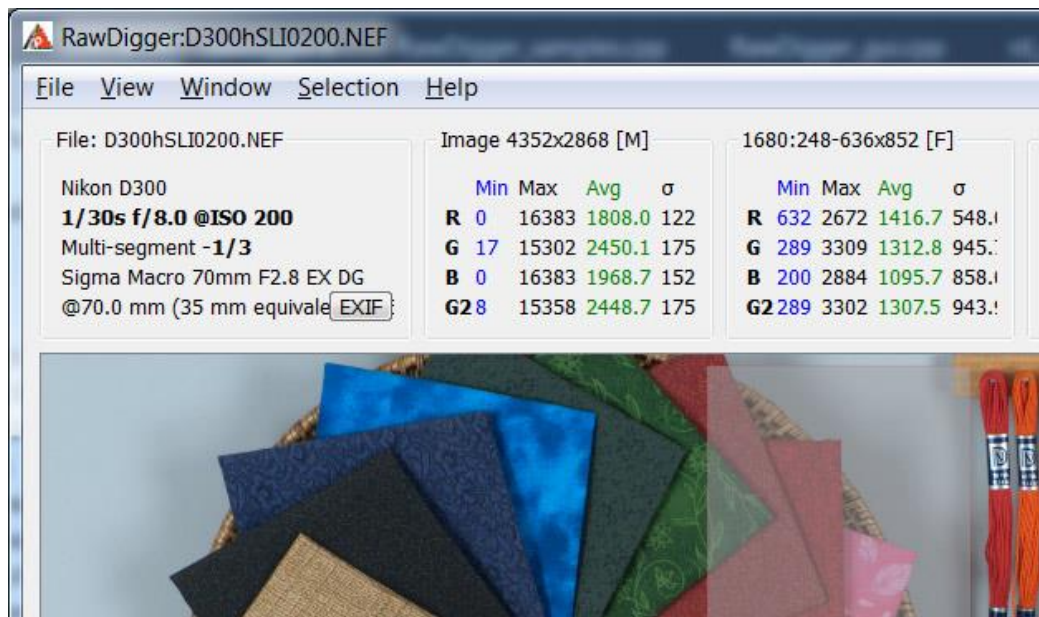
10. Frame selection (for multiframe Raw)

The dropdown list is used to select the frame to be shown. This interface element is not available for files containing only one frame (most raw formats).

11. Section containing controls of the brightness of RGB render

This section allows to control the brightness of RGB render in a non-linear fashion, through setting the value for gamma increase, 0 .. 3 above the regular value of 2.2, for the total value of gamma to be 2.2 .. 5.0. This method makes room for increased brightness in shadows and midtones by compressing highlights, not by clipping them.

12. Right-clicking selections and samples opens the context menu; from here you can delete the selection or sample; show/hide the histogram; convert (change) selection to sample.



Statistics panes for the whole image as well as for a selection may display additional indicators (see picture above):

- **[M]** in the "Image" pane indicates that the display of "black frame" is ON and the statistics includes the data from the masked pixels (the sensor area that does not contain image)
- **[F]** in the "Selection/Sample" pane indicates that filtering of outlying values is ON (please refer to Preferences - Data Processing - Discard abnormal pixel values section)

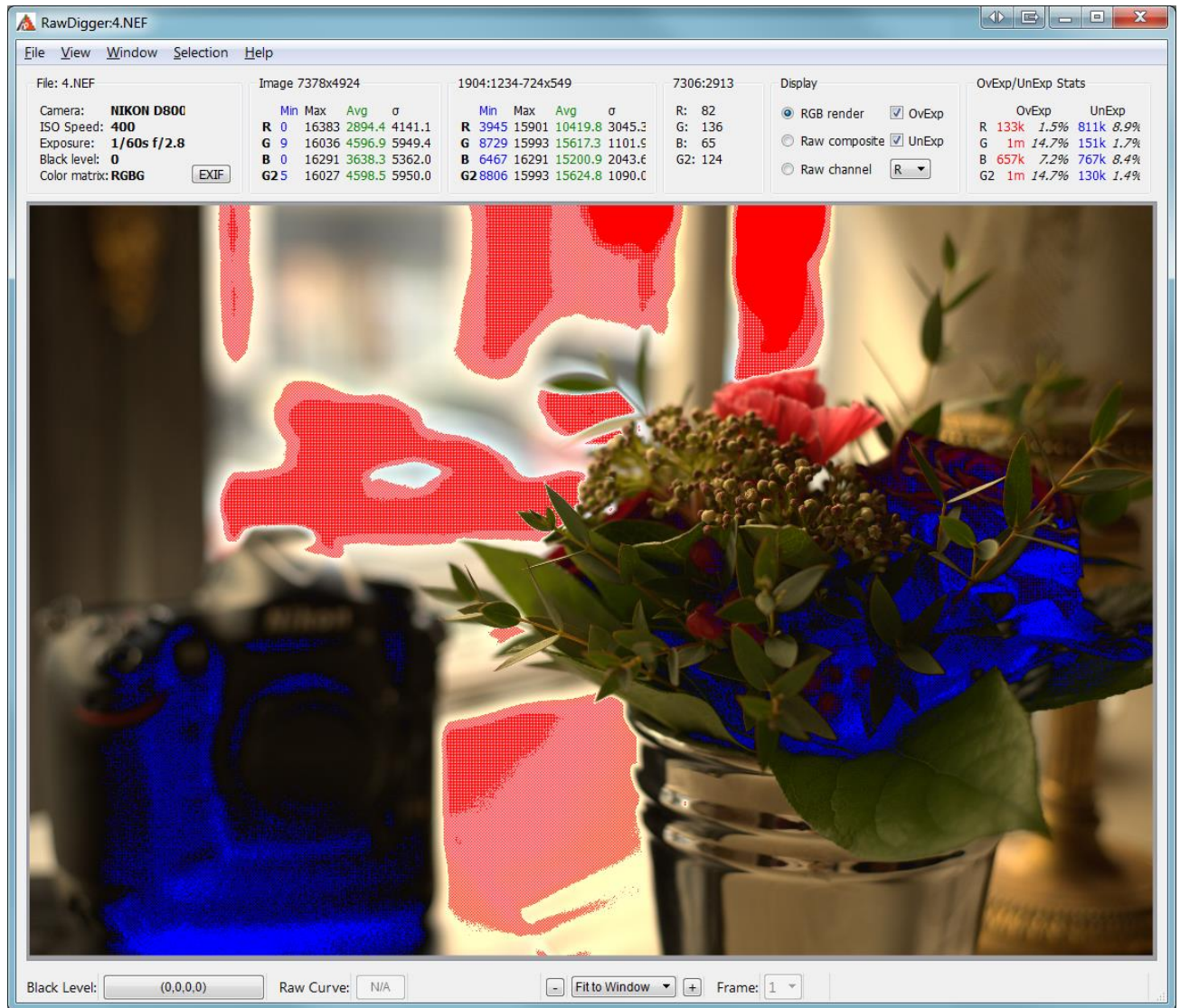
Working with the Main Window

- **Moving the pointer** allows the user to see the pixel values (raw data) under it. Depending on the view mode (see Preferences section below), the program shows either the data value for a specific pixel (the remaining three components are zero) or the pixel values of all 4 color channels for the 2x2-pixel square under the mouse pointer.

- **Pressing the Alt + left mouse button** allows the user to set a sample of a fixed size. The size of the sample is specified in the program preferences (see Preferences section below). The samples set earlier in the image have a gray semitransparent background and green border. Operations with samples are described below, in the Samples Window section.
- **Pressing Shift and the left mouse button** allows the user to make a rectangular selection of an arbitrary size. One angle of the sample is fixed at the moment when the mouse button is pressed; the opposite angle, at the moment when Shift is released. Only one selection can exist at a time, but can be converted into a sample. Operations with selections are described below, in the Selection Menu section of Program Menu.
- **Left-clicking** allows one to scroll the image in the program window
- **Left-clicking a selection or sample** allows to re-position the selection or the sample
- **Right-clicking a selection or sample** displays a context menu:
 - **Delete** – to delete the selection or the sample
 - **Show/Hide Histogram** – to show or hide the histogram for this selection or sample
 - **Convert Selection To Sample** (available only for the active selection) – converts the selection to the sample, that is now the data for the selection is available in the «Samples Window» (more on the «Samples Window» please see below).
- **Drag and Drop** – raw file can be dragged and dropped to the program window or onto Histogram window; this has the same effect as selecting the file through File->Open.

Display of the areas of under- and overexposure

If the checkboxes OvExp (overexposure indication) and/or UnExp (underexposure indication) are On in the Display section the areas with blown-out highlights and/or with plugged shadows will be highlighted with red/blue colors, respectively.



To adjust the levels at which the over- and/or underexposure is diagnosed please use Preferences, Over/Under Exposure section (see below “Preferences” section).

EXIF Window

The EXIF data window will be displayed, if:

- The EXIF button in the metadata info block is pressed
- Menu – Windows – EXIF is used

The EXIF window displays the metadata contained in the file as extracted by Exiftool:

×
EXIF

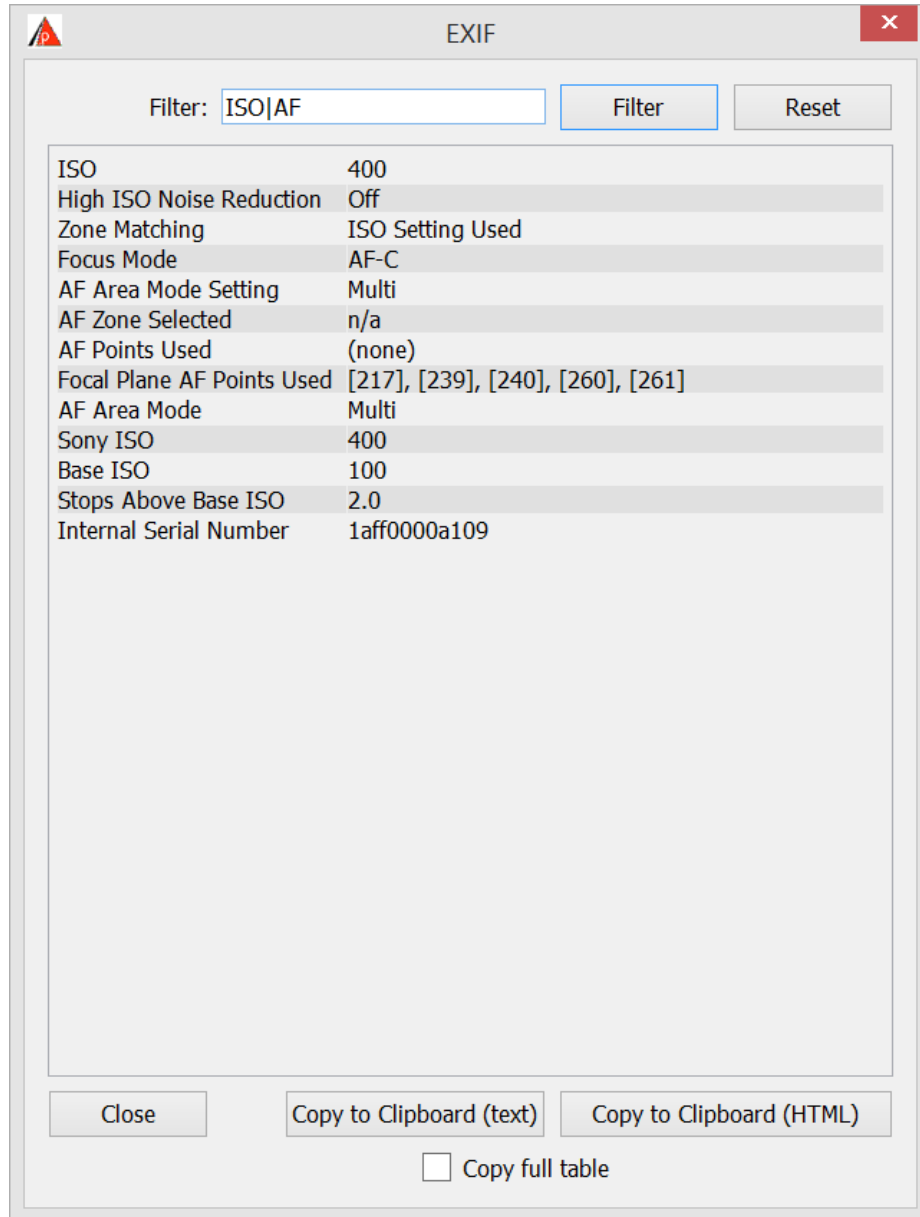
Filter:
Filter
Reset

ExifTool	
ExifTool Version Number	10.13
File	
File Name	aj-Sony24-70F2_8GM-DSC005571_F2_8.ARW
Directory	J:/RAW-ARCHIVE/2016-02
File Size	41 MB
File Modification Date/Time	2016:02:09 07:24:37+03:00
File Access Date/Time	2016:02:09 07:18:17+03:00
File Creation Date/Time	2016:02:09 07:18:17+03:00
File Permissions	rw-rw-rw-
File Type	ARW
File Type Extension	arw
MIME Type	image/x-sony-arw
Exif Byte Order	Little-endian (Intel, II)
EXIF	
Image Description	
Orientation	Horizontal (normal)
Image Width	8000
Image Height	5320
Bits Per Sample	12
Compression	Sony ARW Compressed
Photometric Interpretation	Color Filter Array
Samples Per Pixel	1
Planar Configuration	Chunky
X Resolution	350
Y Resolution	350
Resolution Unit	inches
CFA Repeat Pattern Dim	2 2
CFA Pattern 2	0 1 1 2
Sony Raw File Type	Sony Compressed RAW

Close
Copy to Clipboard (text)
Copy to Clipboard (HTML)

Copy full table

“Filter:” -- this field allows one to enter filtering conditions, based on substring(s):



The “Filter:” field allows one to use regular expressions (in PCRE format); for example, **Width|Height** will result in the display of only those strings that contain substrings Width or Height. The search is case-insensitive.

The buttons to copy the EXIF data to Clipboard and to close the EXIF window are located at the bottom part of the EXIF window:

- Copy to Clipboard (text) button allows one to copy the EXIF table into the Clipboard as text
- Copy to Clipboard (HTML) button allows one to copy the EXIF table into the Clipboard as HTML (preserving the formatting tags)

The “**Copy full table**” checkbox is useful if the filtering is on, but one still wants to place the un-filtered (full) EXIF data into the Clipboard, ignoring the effect of filtration.

Program Menu

File Menu

- **Open:** opens a raw file. If the operation has failed for some reason (format not supported, file corrupted), the program will keep the previously opened file active.
If the current file contains samples whose data has not been yet saved, the program will ask if you want to save them prior to opening a new file. The coordinates of the existing samples and selection will be preserved after the new file is opened if they fall completely within the size of the new file. Other samples and selections will be lost. For the remaining ones, the statistical data will be recalculated using the values from the new file.
- **Next file:** opens the next raw file in the current directory. The settings for the sorting order can be found at Preferences - Misc. Options – File order. If the end of the list is reached and the user attempts to open a “next” file, the program responds with a beep, warning that there are no further files.
- **Prev File:** opens the previous raw file in the current directory.
- **Close file:** closes the current file, frees up memory
 - closes all additional windows (samples, histograms)
 - changes the current folder to %HOME%/Pictures or %HOME%

Useful when working with removable media (flash cards, and others), allows to un-mount and eject the device without closing RawDigger

- **Export Tiff:** exports the data of the currently opened RAW-file as TIFF (see Data Export section below).
- **Dump RAW curve:** this menu item is active only for raw files that use a tone (compression) curve during unpacking. Using this menu item, the user can save the tone curve in the CSV format for subsequent examination.
- **Screenshot:** saves the image of the main program window in the PNG or JPG format. PNG is the default format; to save in JPG, one should select this extension in the File Save dialog box.
Note: this option is disabled and not visible in the menu if **Preferences – Misc. Options – Use OpenGL for bitmap draw** option is checked.
- **Preferences:** activates the dialog box, see description below in the Preferences section.
- **Exit:** quits the program. If there are any unsaved samples of data, the program will ask if you want to save them.
- In addition to the standard menu items listed above, the program remembers the 5 most recent files and displays their list in the File menu.

View Menu

The View menu duplicates the image zoom controls at the bottom of main program window.

- **Zoom In**
- **Zoom Out**
- **Normal Size** sets the scale to 100% (1:1)
- **Fit To Window** sets the scale so that it fits to the program window
- **Full Screen** turns RawDigger to full-screen mode.

Window Menu

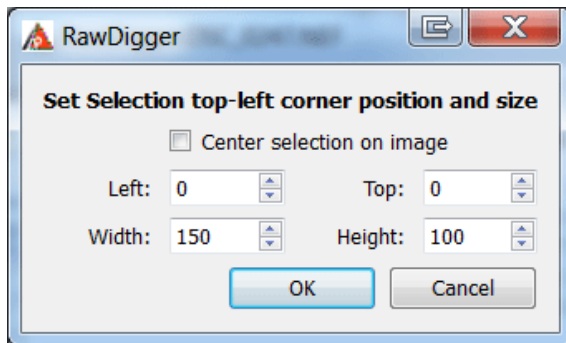
The Window menu makes it possible to show/hide additional program windows:

- **Histogram** - Entire file histograms (see “RawDigger Histograms” section below).
- **Samples Window** - Samples tables (see “Samples Table” section below).
- **EXIF** – Exif window.

Selection Menu

The Selection menu allows the user to perform the following actions over the selected area:

- **Clear Selection:** removes the selected area.
- **Selection Histogram:** opens the window with a histogram of the selected area (see RawDigger Histograms section below).
- **Convert Selection to Sample:** converts the current selection to a sample and adds it to the samples list (see Samples Table section below).
- **Set Selection by Numbers:** allows one to position the selection area precisely by entering the coordinates of the top left corner of the selection, its width and height



When «Center selection on image» is checked «Left» and «Top» fields are grayed-out. The position of the top left corner is calculated automatically so that the center of the selection is in the center of the image.

- **Selection Grid:** to be used for reading data off color targets and (non-)uniformity analysis as described in “Selection Grid” section below.

Help Menu

The Help menu contains five items:

- **Supported Cameras:** shows the list of the cameras supported by the given version of RawDigger.
- **Check for Updates** – checks if there are any updates of RawDigger for the version of RawDigger you are currently running.
 - **Registration Data (for the full license) or Purchase/Activate (for the Trial mode)** – displays activation and registration data dialog
 - **Technical Support Forum** – opens support forum page in your browser.
- **Contact Support** – opens feedback form in your browser.
- **About:** shows information about the program version, available updates, etc.

Hot keys and Shortcuts

MS Windows

- **Ctrl-O** to open a file, same as Menu->File->Open
- **Ctrl ->** (Arrow Right) – to open the next file (Menu -> File -> Next file)
- **Ctrl <-** (Arrow Left) – to open the previous file (Menu -> File -> Prev file)
- **Ctrl-E** – to open the data export dialog (Menu -> File -> Export Tiff)
- **Ctrl-P** to access the Preferences dialog, same as Menu->File->Preferences
- **Ctrl-Q** to exit the program, same as Menu->File->Exit
- **Ctrl+=**, **Ctrl+=** to zoom in, same as Menu->View->Zoom-In
- **Ctrl-** to zoom out, same as Menu->View->Zoom-Out
- **Ctrl-S** to display the image at 100%, same as Menu->View->Normal Size
- **Ctrl-F** to scale the image so that it fits the program window, same as Menu->View->Fit to Window
- **Ctrl-H** to show/hide the histogram window, same as Menu->Window->Histogram
- **Ctrl-L** to show/hide «Samples Window» containing the table of measurements from samples, same as Menu->Window->Samples
- **Ctrl-M** to convert the current (active) selection to the sample, same as Menu->Selection->Convert Selection to Sample

Mac OS X

Same hotkeys as in Windows version, but with Command instead of Control (i.e. Command-O opens file and so on). The only exception is Histogram open/close: Option-H is used because Command-H is reserved for hiding entire program window.

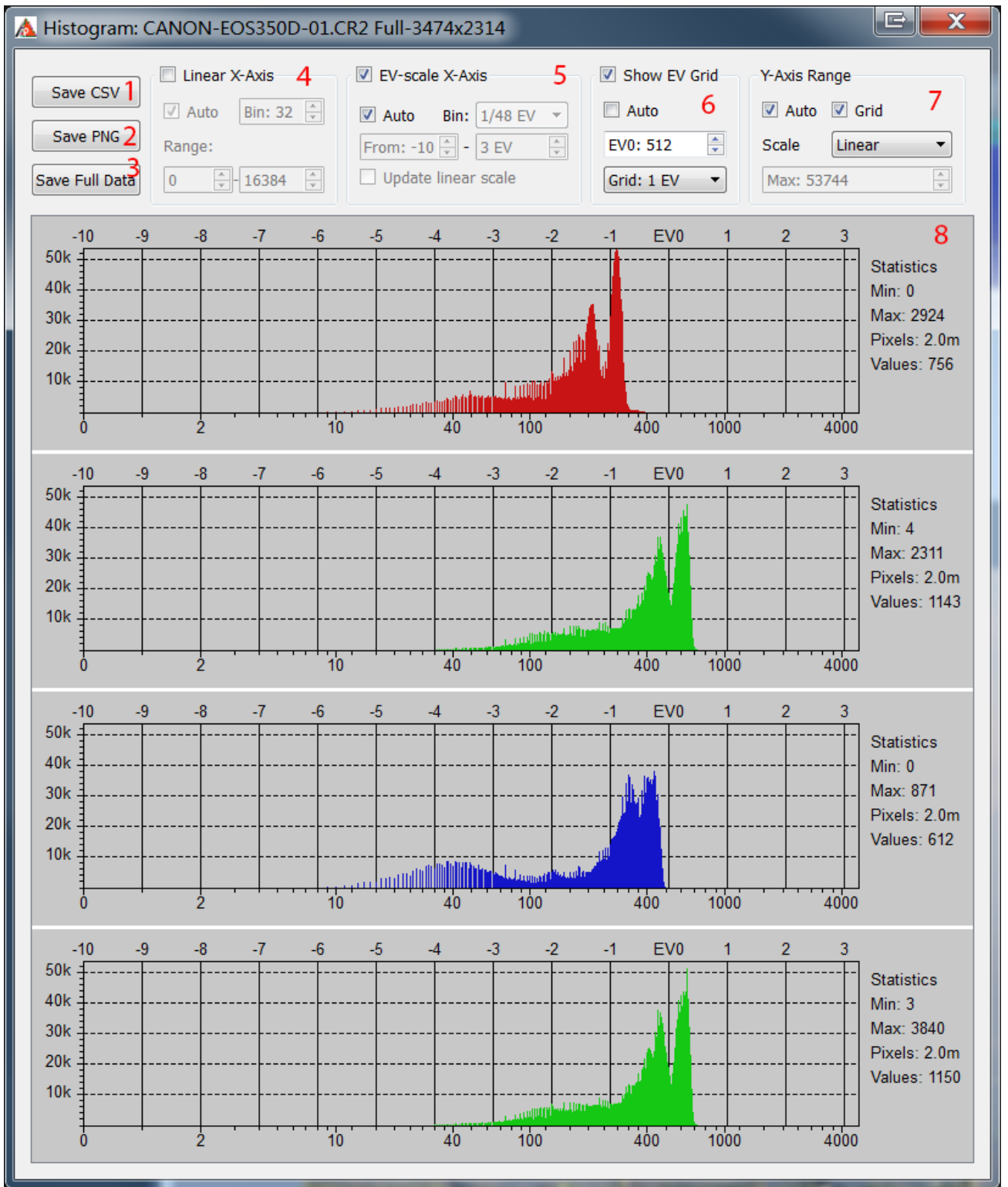
RawDigger Histograms

The Window->Histogram menu item shows the window with per channel histograms plotted using all the file data.

RawDigger histograms have the following features:

1. The **Horizontal scale** can be either *linear* (according to values in raw data from the currently opened file) or *photographic* (linear with respect to the EV scale, that is, every next step of the scale contains twice the signal compared to the previous one). The horizontal axis has two sets of tick labels: linear under the histogram and photographic above the histogram.
2. The **Vertical scale** can be either linear or logarithmic.
3. The width of the histogram **columns (bins)** is always equal to an integer number of pixels in order to reduce aliasing (moiré). Hence, if the column (bin) width is chosen automatically, the histogram occupies from ½ to all of the window width and cannot be zoomed by an arbitrary factor.
4. All per channel histograms are displayed using the same scale.

The histogram window contains histogram controls, which are shown on the figure on the next page.



Histogram window: the red digits mark the controls described below.

- 1. Save CSV:** saves the histogram in the form of a CSV file suitable for further processing (e.g., in Microsoft Excel). The data in the histogram bins is saved according to the current preferences (bin width, work mode, etc.; see below).

2. **Save PNG:** saves the histogram in the form of a graphic file (PNG or JPEG; to save it in JPEG, one should select the extension .jpg or .jpeg for the file to be saved).
3. **Save Full Data:** saves the unprocessed histogram data (not sorted into bins); data is saved as the signal level value vs. the number of pixels with this value.

4. Histogram representation in linear mode

In the linear mode, the horizontal scale is constant all along the horizontal axis. In this mode, the major portion of the plot is occupied by highlights (and, to a lesser extent, midtones) of the image, whereas the shadows occupy a narrow range near the left border of the histogram.

Linear mode controls:

- **Linear X-axis:** linear mode on.
- **Auto:** automatic choice of minimum/maximum and histogram bin width according to horizontal axis.
- **Bin Size:** manual setting of bin width (number of levels in one bin is set).
- **Range:** setting of the visible range on the horizontal axis.

5. Histogram representation in *photographic* mode

In the photographic mode, the horizontal scale is linear with respect to the **exposure stops** (exposure value units, EV). Each stop, regardless of its position in the tonal range of the photo (shadows, midtones, highlights), occupies the same length along the horizontal axis of the histogram.

In the shadows, the number of possible levels may be smaller than the one set by the histogram bin size. For example, the "3rd photographic step from black level" of the image corresponds to values from 4 to 7 inclusively, meaning that there are 4 different levels. In this case, some of the bins will have a height of zero and there will be "holes" in the histogram.

Photographic mode controls:

- **EV-scale X-Axis:** photographic mode on.
- **Auto:** automatic choice of bin width and visible histogram range.
- **Bin size:** manual setting of bin width, as a fragment of 1EV (photographic stop).
- **Range:** setting of the visible range on the horizontal axis.
- **Update Linear Scale:** if on, modifications of photographic mode range will also change the linear range.

6. Viewing EV grid

The EV grid (photographic stops) is shown in the form of solid vertical lines in the histogram field.

Controls:

- a. **Show EV Grid:** show/hide EV grid.
- b. **Auto:** automatic calculation of grid zero (gray point position) and setting grid step to 1EV. The zero is located at the level that is 3 stops (8 times) lower than the maximum pixel value rounded up (ceiling) to the nearest power of 2. For example, if the maximum value of all pixels in the photo is 3000, then the nearest power of two greater than this value is 4096 and the EV0 value for this photo will be automatically set to level 512.
The maximum can be determined either as the maximum pixel value in the currently opened frame, or as a theoretical maximum for the given camera. The setting that switches on the choice of the theoretical maximum for the maximum is available in Preferences – Histograms – **Set histogram EV0 by** (please see the chapter on Preferences below).

- c. **0 EV at:** setting the level for EV0. In photographic mode of the histogram display, changes in EV0 also affect the data visualized; hence, the look of the histogram changes.
- d. **EV tick:** setting the EV grid step (1/3EV, 1/2EV, 1EV, 2EV).

7. Vertical scale control

Vertical scale display is controlled using the following elements:

- a. **Auto** – the upper limit is determined automatically so that all the counts fit into the histogram window while the lower limit is always set to zero
- b. **Scale** – controls the scaling of the vertical axis:
 - i. **Linear** – the scale of the vertical axis is linear
 - ii. **Logarithm** – the vertical scale is set to logarithmic; the graph is calculated for $\log(\text{count}+1)$ to prevent $\log(0)$ issue.
 - iii. **Square root** – the height of the bars is proportional to the square root from the number of pixels that correspond to the bin.
- c. **Grid** – display the horizontal grid lines.
- d. **Max** - set the maximum value for vertical axis, available only with **Auto off**.

8. Statistical data for the histogram:

- a. **Min/Max** – minimum and maximum values for the pixels in the given channel (color)
- b. **Pixels** – for the area which is used for the histogram, number of pixels in the given channel.
- c. **Values** – number of different pixel values in the given channel (this number is a count of non-empty histogram bins, where the bin width is independent of the histogram display mode and has the width of one data number (if the minimum is 1, and the maximum is 16383, the total number of bins is 16383, but some bins may be empty and not counted in Values).

Samples Table

The Samples window shows the table with the samples created in the file:

	ID	Rmin	Ravg	Rmax	Rdev	Gmin	Gavg	Gmax	Gdev	Bmin	Bavg	Bmax	Bdev	G2min	G2avg	G2max	G2dev
495:251-34x34	1	460	630.1	701	29.6	267	412.6	476	27.6	106	139.1	157	8.29	304	421.2	476	26.2
553:320-34x34	2	497	641.0	716	29.2	332	421.3	486	26.6	116	143.7	167	7.77	312	429.3	491	26.3
681:379-34x34	3	513	608.9	716	29.7	336	397.5	450	20.7	110	136.5	159	7.57	352	406.4	460	20.5
880:235-34x34	4	84	456.9	502	74.7	55	269.4	292	33.7	23	86.3	100	10.2	63	274.7	300	37.2
1047:144-34x34	5	476	525.4	559	13.3	285	309.2	332	8.31	88	100.0	113	4.07	281	316.9	340	9.14
1192:241-34x34	6	640	796.9	896	38.7	450	522.2	595	25.6	148	173.1	197	8.83	455	532.0	602	25.1
1245:360-34x34	7	968	1177.8	1439	85.8	708	846.2	1083	62.7	246	292.4	344	21.9	716	853.1	1024	62.1
1237:465-34x34	8	760	946.5	1156	63.7	565	667.6	798	41.9	185	231.4	281	15.5	571	676.8	790	42.9

Samples window

The Samples table lists (left to right):

- Coordinates of the top left corner and the size of the sample (format X-Y-Width-Height).
- Sample number.
- For each color channel: the minimum (min), average (avg), maximum (max) values and root-mean-square deviation (dev) over the sample area.

The background color of the cells corresponds to the «colors» of the respective raw channels in the file.

The font color corresponds to the font color in the informational blocks of the main window (blue for min values, green for max values, black is used for display of average and standard deviation.)

One or several rows in the table can be selected (to select several rows, click them holding down the Ctrl key). The selected rows will have a blue background (see image above).

If some rows are selected, the corresponding samples in the main program screen start blinking.

The top part of the window, above the list of samples, contains the following controls:

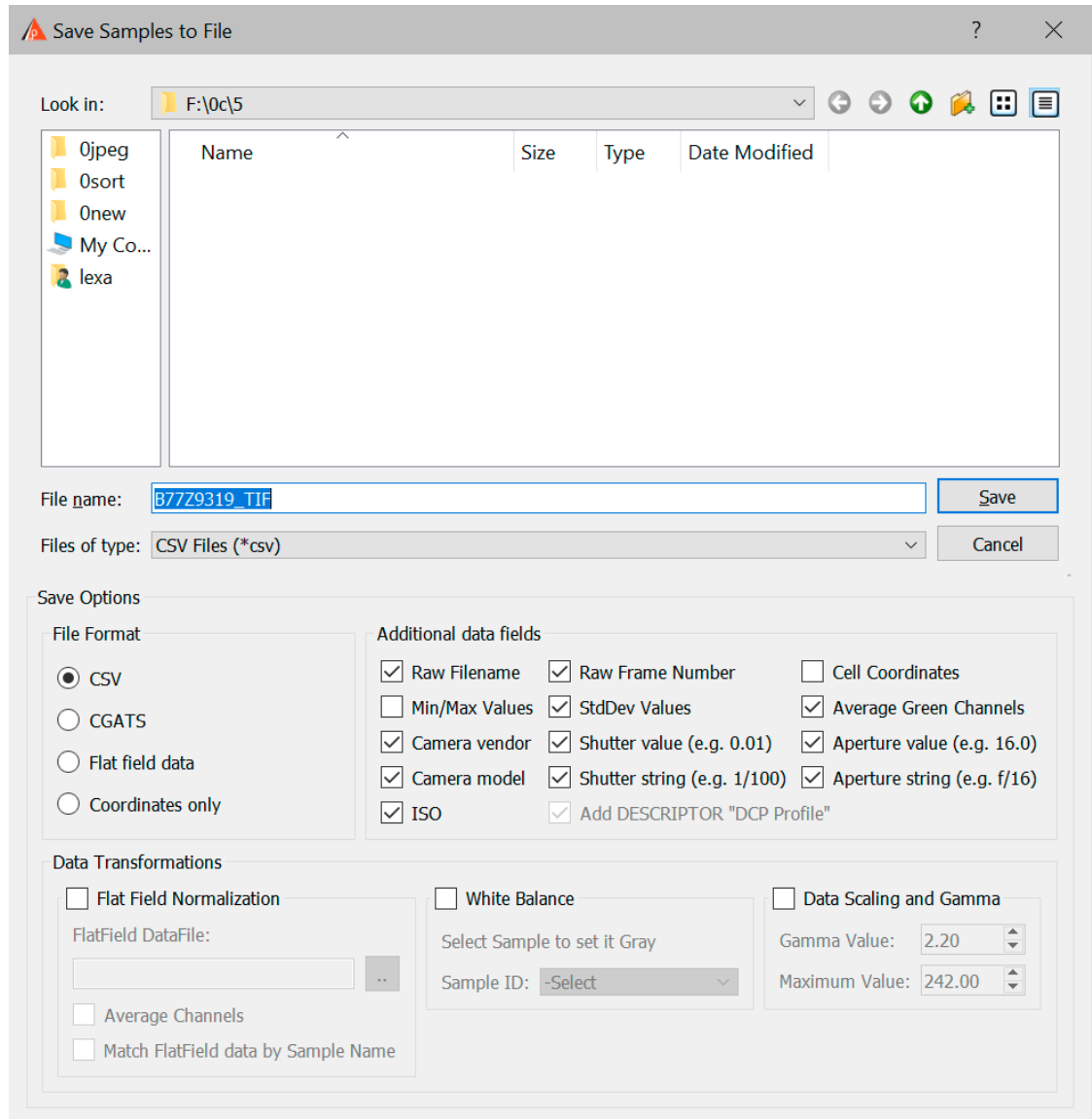
1. **Save Samples:** saves all values from the samples list (see section Saving Samples Table below).
Append File: activated if samples have already been saved during the current program session and the selected format allows appending. If this box is checked, **Save Samples** button changes to **Append File**, no new file name dialog appears, and the data is appended to the file that was created earlier. The **Append File** option is activated only if the previous data file was saved in the CSV format (see below); for the CGATS format, appending samples to a file is not possible.

2. **Histogram:** opens windows with histograms for all selected table rows. The histograms are shown only for samples containing more than 25 pixels.
3. **Remove Sel.:** removes the selected rows and corresponding samples in the main screen; closes the windows (if any) with histograms corresponding to the samples.
4. **Sel. to Clipboard:** copies the selected rows in system clipboard. If 'Header to Clipboard' checkbox is checked, the data will be copied with the table headings.
5. **Remove All Samples:** this button removes all samples from the table.
6. **Load** – loads a previously saved file with coordinates of sampling (see below, «Saving Samples Table»). When loading, select a previously saved file and, if you want to keep the existing samples too, uncheck *Clear existing samples*

The Samples table is enabled in Research and Profile Editions of RawDigger.

Saving Samples Table

When saving the Samples table, the dialog window similar to following is displayed:



Save Samples Table window.

In addition to standard dialog elements which are used to specify the name of the file, this window contains additional controls for saving the samples table:

1. The **File Format** block is used to choose the format of the saved file:
 - **CSV**: saving in Comma Separated Values format, which is convenient for subsequent data analysis in Microsoft Excel and similar programs.
 - **CGATS**: saving in Committee for Graphic Arts Technologies Standards format, which is used, among other things, in color profiling software.
 - **Flat Field Data** – this file contains the characterization of the variations in the sensor response that occur due to light variations at the space occupied by the target, as well as caused by different forms of vignetting.

Data will be obtained by shooting an even monochrome non-textured matte surface (thick white paper or plastic is OK given they are placed physically flat) placed on top of the target or instead of the target, in exact same light, same focusing, same aperture, and same camera position. Same camera ISO setting may be needed too. The shutter speed for flat field shot does not need to be the exact same as for the shot of the target itself. In practice, the higher the exposure for the flat field shot is, the better accuracy can be achieved; however flat field shot shall have no overexposed zones whatsoever.

We suggest starting with overexposing the flat field shot by 1.5 EV over the meter readings in center-weighted or spot mode. As usual for this type of work, a steady enough tripod and remote camera control make things easier.

Flat field data if present can be used to normalize the target shot data to overcome most of non-uniformities. The data for the flat field shots is stored in RawDigger-specific format

- **Coordinates only** – saves the coordinates of the sampled regions to a file with .RDS extension, this file can be later loaded by pressing the Load button.
2. The **Additional Data Fields** block is used to indicate which data fields are to be included in the saved file.
- **Raw Filename:** include the file name.
 - **Raw Frame Number:** include the frame number in raw file.
 - **Cell Coordinates:** include, in separate table columns, the coordinates of top left corner, the width and height of selected area.
 - **Min/Max Values:** include minimum/maximum values.
 - **StdDev:** include standard (root-mean-square) deviation values.
 - **Average Green Channels:** average the values of two green channels (this option is active only for RGBG files).
Sample name and number, as well as average values for each channel, are always included.
 - **Camera vendor/Camera model** – includes the names of the camera manufacturer and camera model in the output CSV file.
 - **Shutter value/Shutter string** – information on the exposure will be included in the output CSV file:
 - **Shutter value** – exposure in seconds (for example 0.01).
 - **Shutter string** – exposure, in “pretty” format (for example, 1/100).
 - **Aperture value/Aperture string** – information about the aperture will be included in the output CSV file:
 - Aperture value – numeric value (for example 5.6)
 - Aperture string – “pretty” string (for example f/5.6)
 - **ISO** – the ISO speed value will be included in the output CSV file
 - **Add DESCRIPTOR “DCP Profile”** will add this string to output CGATS file (use this with BasicColor Input profiler to create DNG profile).
3. **Flat Field Normalization** – to point to the file with Flat Field data that will be used to correct non-uniformities.
- **FlatField Datafile** – file, containing flat field data.
 - **Average Channels** - to average all channel data for the flat field correction data calculation.
 - **Match Flat Field Data by Sample Name** - for the flat field compensation, data between ffd file and target measurements is matched based on the patch names instead of line numbers.

4. **White Balance** – output data will be white-balanced based on the readings from the patch indicated by **Sample ID**. Normally a neutral gray patch is used for the purpose; often the target manufacturer suggests the proper patch. White balancing is performed by multiplication of channel values for all patches by the coefficients that make the RGBG readings from the indicated patch equal. This setting can't be switched on for single channel (black and white) RAW files.
5. **Data Scaling and Gamma** – output target data will be scaled and gamma-corrected:
 - **Gamma Value** – set the value of gamma, 0.1 to 4.0
 - **Maximum Value** – set the maximum value for the brightest patch (scaling is performed after patch data averaging)

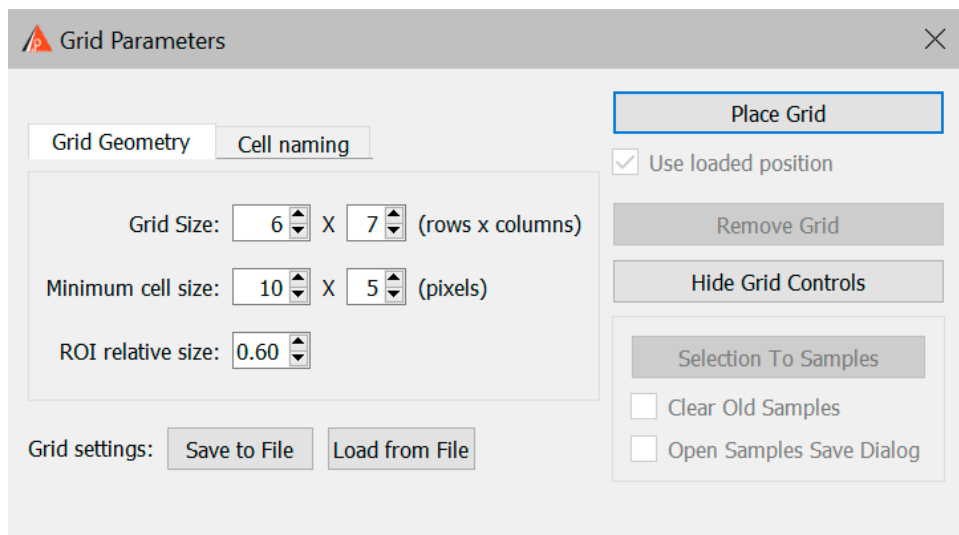
Flat Field Normalization, White Balance, Data Scaling, and Gamma are enabled only in RawDigger Profile Edition.

Selection Grid: processing color targets

As a routine while color profiling one needs to sample many color patches. This can be achieved by setting Selections manually and subsequently transforming Selections into Samples, but in RawDigger we offer a more productive and convenient method of processing the color targets.

The Selection Grid is enabled only in the RawDigger Profile Edition.

Grid-type selection is activated via menu: **Selection->Selection Grid**. You will be presented with the Grid Parameters dialog that allows controlling the grid parameters.



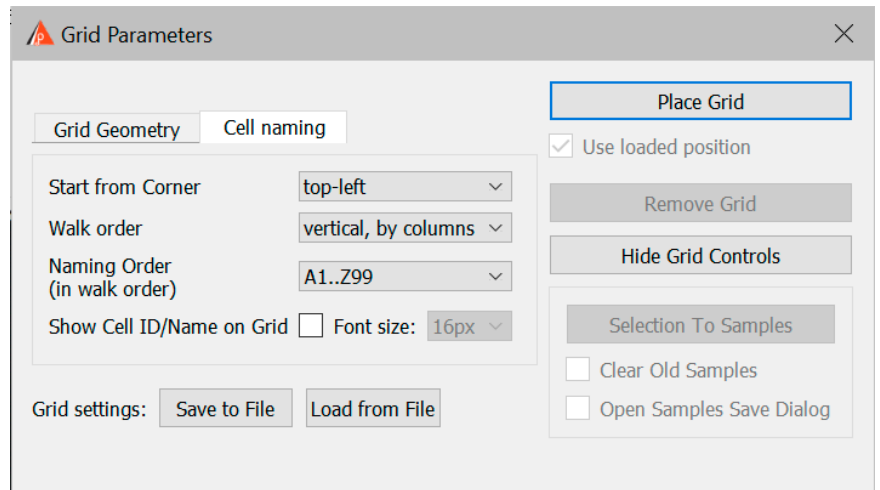
Dialog parameters:

- **Grid Size:** number of the cells that form the grid
- **Minimum cell size:** the minimal number of pixels that compose the cell of the grid; while interactively changing the size of the grid this number limits the cell shrinking.
- **ROI relative size:** the averaging of the values under the cell shall take part from the central portion of the cell, as defined by the region of interest, ROI, marked in red. ROI: the ratio of the cell side size (cell being displayed as the red rectangle) to the size of the side of sampling rectangle (this rectangle is displayed as gray).

- **Grid settings button group** (see below how to save and load grid settings):
 - **Save to file** – saves the current settings to a file.
 - **Load from file** – loads the grid settings from a file

- In the **Cell Naming** tab, there are located settings to control grid cell naming:

- **Start from corner:** to select the corner at which the first cell is placed
- **Walk order:** the order in which the cells are numbered, column first or row first



- **Naming order:** one of the 7 methods of cell naming
- **Show Cell ID/Name on Grid:** to display (or not) the cell names

- **Place Grid:** to place the grid on the screen
 - **Use loaded position** – uses the grid’s position if it was loaded from a file (this checkmark will only be available if the grid’s position was successfully loaded).
- **Remove Grid:** to remove the grid from the screen
- **Selection to Samples:** fills the Samples (deleting the old content if the checkbox to Clear Old Samples is set)
- **Hide Grid Controls:** to hide the grid control dialog.

After the **Place Grid** button is pressed the main program window displays the grid. All the grid parameters except the **Grid Size** (grayed out) can be altered using the Grid Parameters dialog.



You can move the grid on the screen:

- Moving the corners:
 - While the left mouse button is pressed you can move one corner.
 - While Ctrl is pressed simultaneously with the left mouse button you can change the dimensions of the grid
- To drag the whole grid set the mouse pointer to the center of the grid, press and hold the left mouse button and do a drag.

RawDigger User Guide

After the **Selection to Samples** button in Grid Parameters dialog is pressed the sample table is filled with the readings named in accordance with the cells naming scheme.

	ID	Rmin	Ravg	Rmax	Rdev	Gmin	Gavg	Gmax	Gdev	Bmin	Bavg	Bmax	Bdev	G2min	G2avg	G2max	G2dev
A1	1	159	204.1	251	11.85	310	366.0	438	15.24	182	232.7	283	12.46	311	364.6	431	15.22
A2	2	619	697.4	777	19.74	685	762.8	837	20.43	188	233.5	280	12.43	671	762.4	842	20.73
A3	3	44	74.3	111	9.08	347	405.9	463	15.73	677	747.4	824	20.95	346	401.9	472	15.87
A4	4	1316	1432.8	1550	28.91	3800	4002.7	4216	54.88	2921	3116.2	3304	48.10	3788	3991.9	4181	54.41
B1	5	547	645.8	716	20.51	1106	1279.8	1382	29.65	729	845.4	934	23.44	1093	1275.9	1382	30.62
B2	6	115	157.4	200	10.89	623	708.2	789	19.88	1028	1121.6	1227	25.11	628	701.7	772	19.92
B3	7	221	272.6	322	13.17	971	1056.4	1140	23.62	360	418.1	488	15.66	954	1052.8	1146	23.62
B4	8	843	926.3	1017	22.20	2485	2621.7	2778	38.88	1943	2089.5	2229	34.78	2429	2611.9	2783	39.23
C1	9	201	246.4	294	12.68	836	935.0	1028	22.94	916	1008.5	1104	24.00	820	928.7	1024	23.32
C2	10	446	505.6	567	16.56	457	518.4	579	17.00	346	408.2	468	15.41	450	517.1	579	16.95
C3	11	333	390.7	450	15.14	224	281.9	343	13.90	129	169.4	228	11.38	231	281.0	336	13.95
C4	12	493	563.4	627	17.58	1484	1585.1	1694	30.48	1168	1271.6	1366	26.76	1475	1578.1	1707	30.36
D1	13	145	189.2	238	11.40	462	522.0	593	17.16	195	242.6	292	12.68	453	519.5	586	17.12
D2	14	101	137.9	174	10.37	248	291.0	348	13.46	323	385.1	441	15.01	237	288.0	347	13.54
D3	15	999	1084.4	1164	24.17	1846	1961.2	2084	32.87	362	426.8	487	15.80	1835	1959.6	2087	33.02
D4	16	253	304.0	361	13.74	768	846.1	927	21.82	593	680.4	755	20.07	737	841.1	923	21.99
E1	17	302	352.4	410	14.50	1002	1095.6	1179	24.34	1145	1256.0	1354	26.15	995	1088.1	1198	24.56
E2	18	526	613.7	685	18.99	1540	1663.1	1792	31.70	427	489.9	558	16.67	1545	1662.9	1782	33.16
E3	19	440	510.8	574	16.90	612	691.6	770	19.59	812	893.1	981	21.87	616	687.8	758	19.36
E4	20	98	140.5	186	10.66	334	393.8	453	16.04	259	320.4	373	14.30	322	391.4	457	15.84
F1	21	410	467.5	530	16.48	1877	2006.5	2126	34.17	1334	1447.1	1549	28.91	1865	2000.5	2149	34.27
F2	22	751	823.4	913	21.09	1080	1175.4	1273	25.28	227	273.0	328	13.32	1081	1176.5	1269	25.09
F3	23	146	189.8	233	11.66	1054	1203.1	1299	27.11	1106	1256.4	1358	29.87	1056	1196.8	1295	27.97
F4	24	26	59.1	94	8.45	118	164.7	205	10.89	96	133.8	177	10.28	118	162.6	210	10.95

You can process and save these readings in the usual manner (save as CSV or CGATS, delete table rows, display histograms of selected samples, etc.).

The last set of Selection Grid parameters are automatically saved and reused when the program is restarted.

Saving/Loading grid settings

Grid Settings – Save to File button:

RawDigger User Guide

- This will save the grid settings to a file with an RGS extension, exactly as they are currently set in the grid settings dialog (Grid Size, Minimum cell size...).
- If the grid is placed over an image, then the coordinates of its corners will be saved.

Grid Settings – Load from File button:

- This is active only if there is no grid on the screen (if there is one, use the Remove Grid button)
- This will read all of the settings for the grid setting dialog from an RGS file, and apply them.
- If the coordinates of a grid were recorded to the RGS file, then this will read them and the checkbox Use loaded position under the Place Grid button will become active.

Place Grid button with the **Use loaded position** checkbox set:

- If the pixel dimensions of the currently opened image file exactly correspond to the dimensions of the grid settings that were saved to the RGS file, then the grid will be placed exactly as recorded, “to the pixel.”
- If the pixel dimensions of the current file differs from the one for which the grid was saved, then the grid will be set based on relative coordinates.

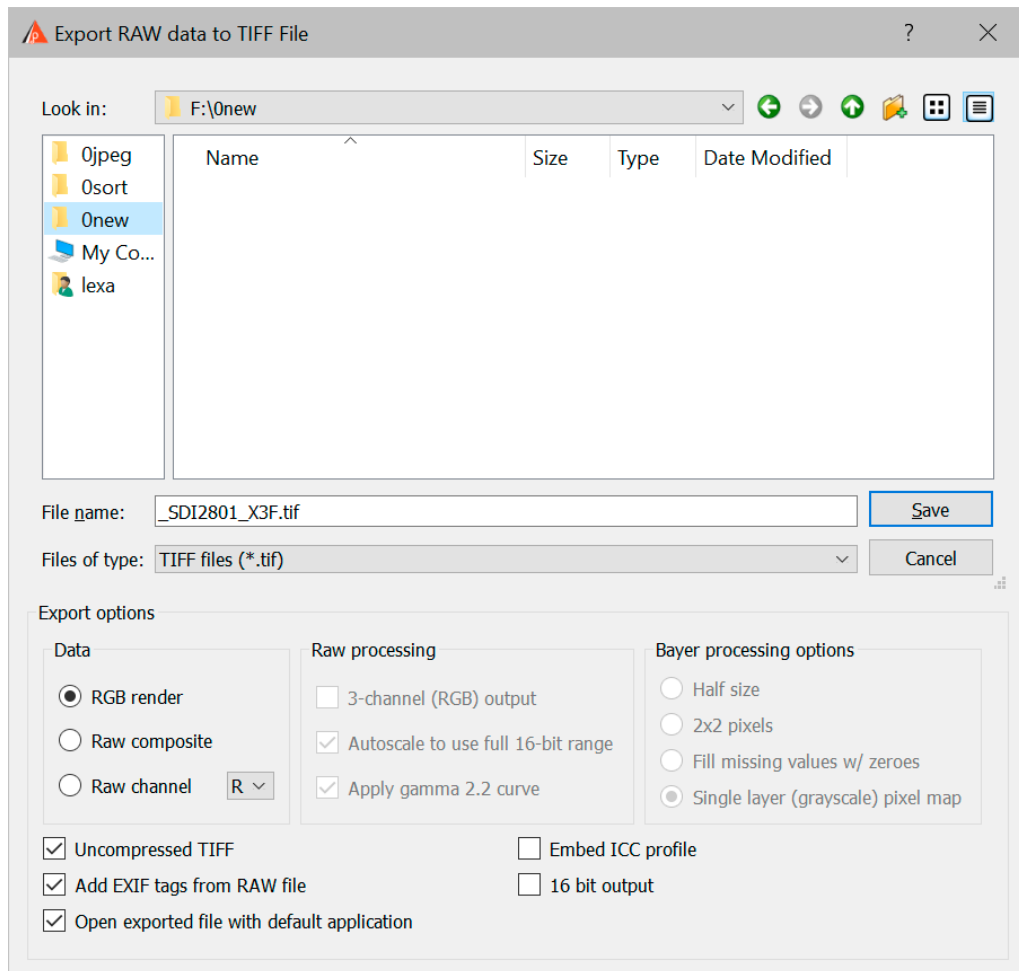
When restoring the grid from the saved coordinates, the visible part of the screen scrolls so that the grid is visible (this is relevant when working with large zooms).

Raster Image Data Export

Raster image data export allows saving data as a TIFF; it operates for the following types of data:

- Results of RGB-render
- All color channels of RAW file; resulting TIFF file will contain one, three or four channels, depending on the type of RAW
- Separate color channel of the RAW file; exported as a monochrome TIFF

Upon starting data export (Menu->File->Export Tiff), the following dialog is presented to the user:



Export options, located below the file name input line, control the file export:

Data section allows one to set the type of the data to be exported:

1. **RGB Render:** this option sets the export to RGB.
This option will be available if RGB rendition was calculated for the RAW file. If the option is unavailable, it is grayed out and unavailable for selection.
If RGB option is selected, RAW and Bayer processing options are made unavailable.
If the settings for Brighten are active, they are applied to the exported file, making it "brighter".
Data is exported into an 8-bit or 16 bit Tiff- file (see 16-bit output option below):
 - a. Single channel (Grayscale), if the RAW file is recorded using monochrome camera.

- b. 4-channel (interpreted by image processing software as CMYK), if the source RAW file is 4-color (RGBE, CMYG, etc.) and the settings state “Display RGB Render in RAW colors”. The values in the file will be inverted with white coded as 0 and black coded as 255, as it is traditional for CMYK.
 - c. 3-channel RGB-file in all other cases.
 2. **RAW composite** – the resulting TIFF will contain RAW data coming from all the color channels from the source RAW file.
The data will be processed according to the settings in **Raw processing** and **Bayer processing options** (for Bayer type RAW files) sections.
The result on the export is a 16-bit TIFF-file:
 - a. Single channel (grayscale) for monochrome RAW files.
 - b. Single channel (grayscale) for Bayer RAW, if in the Bayer Processing Options the mode “Single layer (Grayscale) pixel map” is set.
 - c. 3-channel RGB or four channel RGBG if three-channel RGB output is chosen.
 - d. 4-channel (non-inverted, white coded at full scale, black coded as 0) interpreted as CMYK “negative” for all other cases.
 3. **Raw channel** (you need to select the channel from the drop-down menu) – the output is 16-bit single channel (grayscale) TIFF file containing the selected color channel from the RAW file.

Raw processing section allows setting the output processing options:

1. **3-channel (RGB) output** – two green channels of RGBG files will be averaged.
This setting will be grayed out for non-RGBG files.
2. **Autoscale to use full 16-bit range** – RAW data pixel values will be multiplied by a coefficient calculated so as to stretch the data to fill the whole 16-bit output range.
For YCbCr data channels Y and Cb/Cr are scaled with different multipliers (for more details on YCbCr please see **Show YCbCr data for Canon sRAW files** in Settings section below).
In all other cases the scaling multiplier is the same for all channels.
3. **Apply gamma 2.2 curve** – if this option is “on”, the output is gamma-corrected to gamma 2.2, and if it is “off” the output contains linear data.

Autoscaling and gamma-correction are rounding the values to integers. These options are better suited for visual inspection of data. If the data is to undergo numerical analyses, we recommend switching off all options in the RAW processing section. This way, it is guaranteed that the data is accurate.

The **Bayer processing** section controls the output for Bayer-type 2 x 2 pattern RAW files. For all other types of RAW and pseudo-RAW files (monochrome, linear DNG, Canon sRAW) this section is unavailable.

1. **Half Size** – 2 x 2 Bayer pattern will be binned and recorded as a single RGB pixel, and the resulting TIFF file will be half of the pixel dimensions of the sensor.
2. **2x2 pixels** – the resulting file will be of full size, though pixel values in 2 x 2 patterns will be the same.

3. Fill missing values w/ zeroes – the resulting file will be of full size, but only the data presented in source RAW data will be meaningful, while all the missing values will be zeroed out.
4. **Single layer (grayscale) pixel map** – This will be exported as a full-sized single channel (grayscale) file, where every pixel contains data corresponding to its pixel value in the matrix. The color information can be restored at a later stage of the user-supplied processing routine by taking the original Bayer pattern into account.
This mode is intended for use with cameras in which the sensors have had the CFA removed (Meaning, originally “color” cameras, re-worked to monochrome).

Additional export options:

1. Uncompressed TIFF - to save an uncompressed TIFF file.
2. 16-bit output: write RGB export as 16-bit TIFF file (RAW composite/channel export is always 16 bit).
Note: 16-bit output available only in 64-bit version of RawDigger due to available memory restrictions.
3. The option Add EXIF tags from RAW file allows copying the EXIF data from the source RAW file to the exported TIFF file.
4. Embed ICC profile will embed ICC profile into resulting file (RGB rendering export only).
5. **Open exported file with default application** – the resulting file will be opened by your default application associated with TIFF files.

Data export as TIFF is available only in Research and Profile Editions of RawDigger.

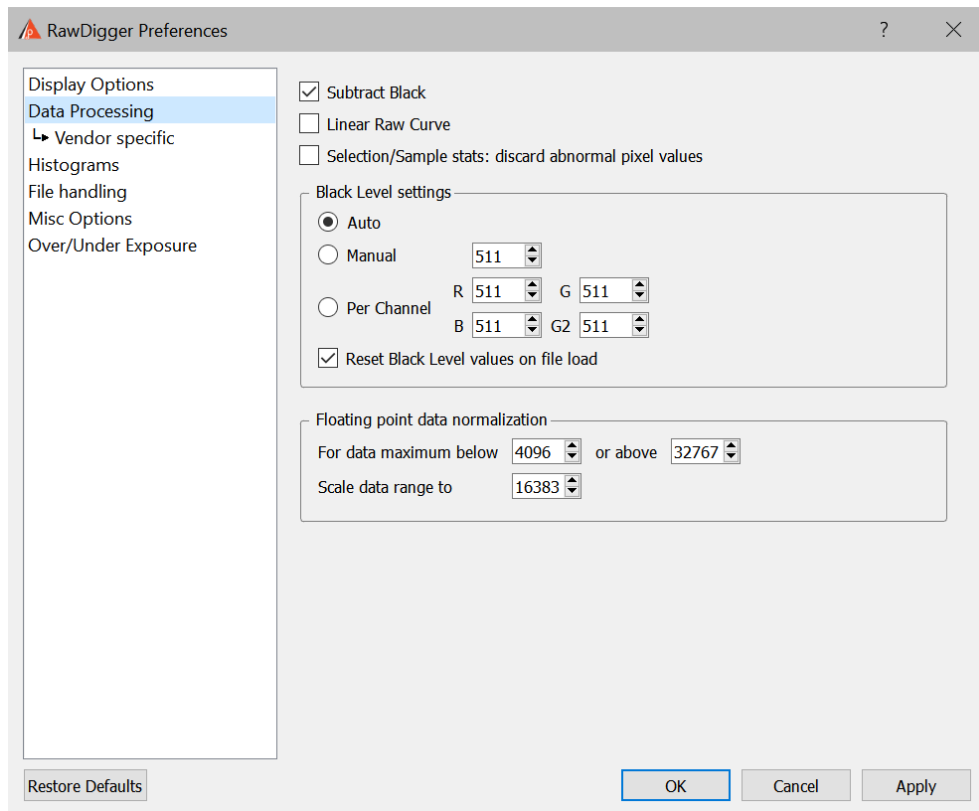
Processing of floating point data

Starting with version 1.2, RawDigger supports DNG files containing floating point data. This format is used as an output by a number of programs that overlay several shots in order to extend the dynamic range and thus create HDR (High Dynamic Range) data.

Unlike regular integer raw files, the data range in raw files containing floating point data can be very small, like (0..1) or quite large, (0..1000000). The range does not affect data processing, and is selected by the authors of the respective programs based mostly on convenience.

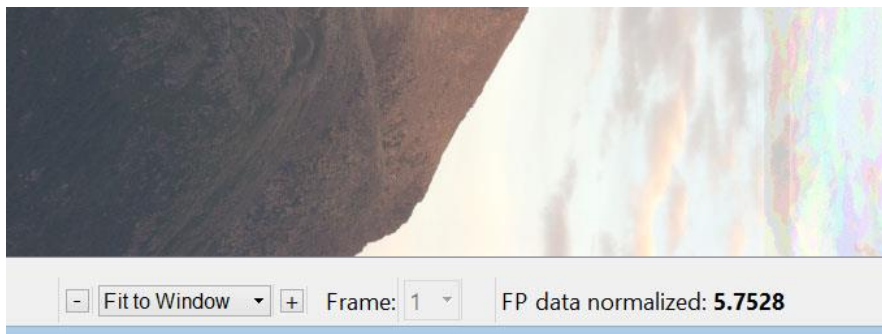
Internally, RawDigger uses 16-bit unsigned integer data representation. Thus, the floating point data raw files are converted to internal RawDigger data format; and if the range of floating point data is too small or too large, normalization is performed (input floating point data is multiplied by a certain coefficient).

Normalization is controlled through the settings in **Floating point data normalization** in **Preferences – Data Processing**



If the actual data range in the current raw file **or** the data maximum as it is set in metadata through WhiteLevel tag in DNG) exceeds the range “below XXX or above YYY”, all the pixel values (data numbers, DNs) in such a file will be multiplied by a constant, calculated in such a way that the new actual maximum will be equal to the value in the field ‘Scale data range to’.

If upon opening a file such normalization was applied, the status bar in RawDigger will contain ‘FP data normalized: *the value of the multiplier used for normalization*’:



Please be careful: because of the normalization the shapes of the histograms of properly exposed and underexposed shots will look similar because the multiplier for the underexposed file will be set to a larger value, «compensating» for the smaller actual maximum in raw data.

Preferences

The Preferences window is accessed via the **File** menu or by pressing **Ctrl-P** in main program window.

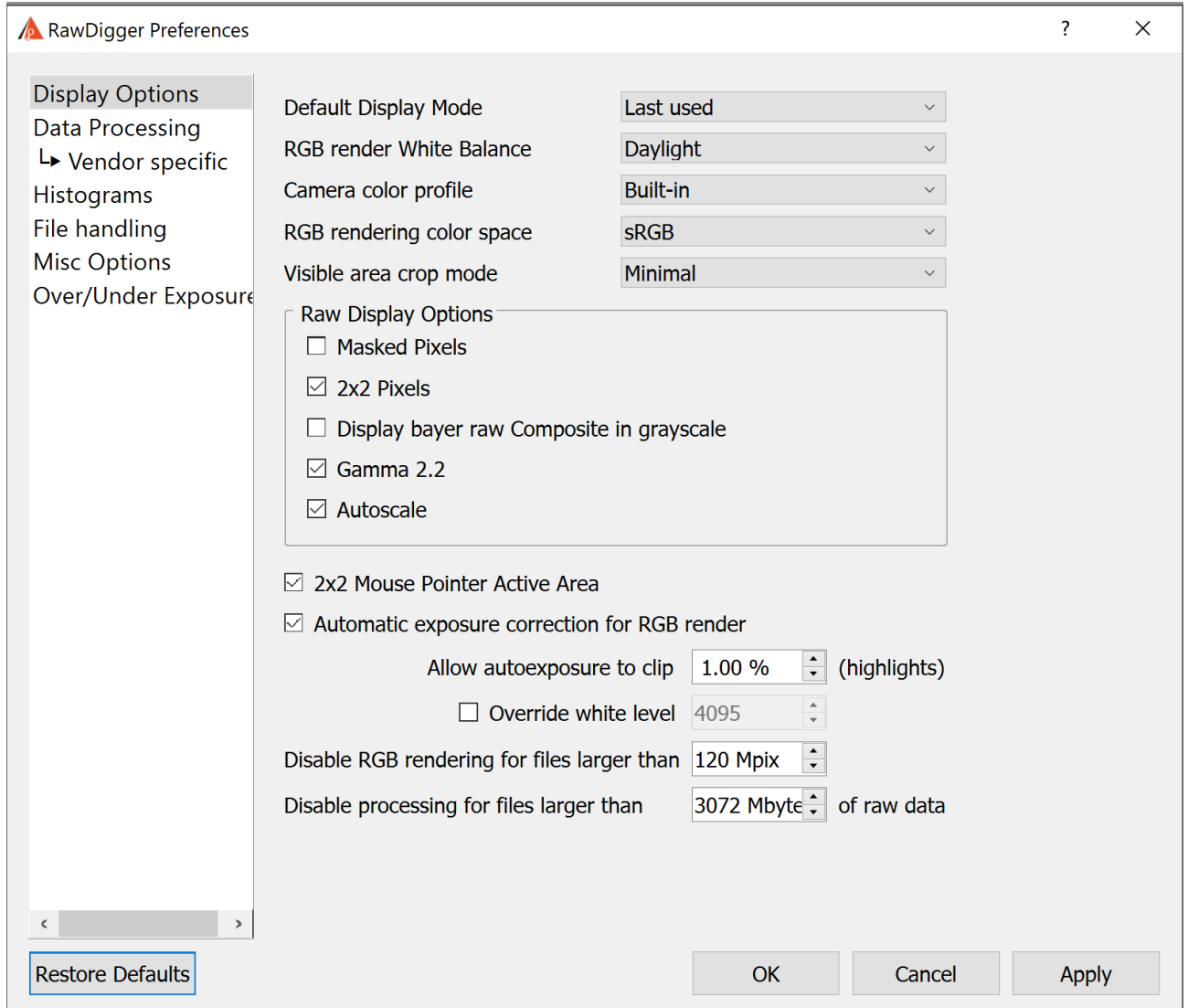
Available settings are grouped into three tabs:

1. **Display Options** – for parameters that affect the data display but do not affect the raw values interpretation
2. **Data Processing** – for parameters that affect the interpretation of the raw data
3. **File handling** for settings that affect the opening / processing of files
4. **Misc. Options** – for parameters controlling the behavior of the program, such as window positions preservation etc.
5. **Over/Under Exposure** – the parameters that control the display of the over- and underexposed areas.

The buttons at the bottom of the Preferences dialog behave in the same manner, whatever the current opened tab is:

- **OK**: closes the Preferences window, saves the preferences in the Windows Registry and applies them to the currently loaded image, if any.
- **Cancel**: closes the Preferences window without changing or saving the preferences.
- **Apply**: saves the modified preferences and applies them to currently open images; does not close the Preferences window.
- **Reset Defaults**: returns the Preferences window fields to their default values.

Display Options Tab



RawDigger Preferences window: Display Options Tab

The user preferences are arranged into the following groups:

- **Default Display Mode** – to set the view mode for the next file to be opened. The values are:
 - **Last Used** – to use the same view mode as it was for the previous
 - **RGB render** – to view the processed raw (if this mode is not available for some reason the program defaults to Raw composite view mode)
 - **Raw composite** – to view RGB or Grayscale representation of all the channels in the raw file (please see below Display RGBG in grayscale mode)
 - **Raw Channel 1 .. Raw Channel 4** – the selected channel of the raw file will be displayed in grayscale.
- **RGB Render White Balance:** white balance used to create RGB rendering. This parameter has **no** influence on the representation of the raw data in information blocks for the image and the

selected areas, neither in histograms nor in samples table.

Three values of White Balance are possible:

- **Daylight:** balance for daylight (the balance parameters in the program are “built-in”, separately for each camera).
- **As Shot:** white balance as measured by the camera at the moment of shooting.
- **Auto:** white balance calculated from the raw data.
- **Camera Auto/As shot:** uses white balance recorded by camera WB sensor even if shot settings are different (so: shot set to some kind of manual WB). If the camera does not record the "Camera Auto" white balance, then the "As Ahot" setting will be used as fallback.
- **UniWB:** white balance multipliers are set to 1-1-1
- **Camera color profile:** color profile used for RGB rendering. Again, this parameter does not affect raw data representation. Possible settings are:
 - **No profile (raw color)** – switches off color conversion between camera color space and sRGB. For 4-color cameras (CMYG, RGBE, etc.) data in this mode can't be displayed, however the file with “untouched out-of-camera colors” can be obtained through data export (see Data Export section).
 - **Built-in** – use color profile provided within RawDigger
 - **Embedded in RAW** – use color profile embedded in RAW if present. If no such profile exists, RawDigger will fallback to 'Built-in' mode.

- **RGB rendering color space,** choices are sRGB (default), Adobe RGB, Wide Gamut RGB, ProPhoto RGB.

RawDigger doesn't use color management, the output to screen is the direct one, the users of monitors set to emulate Adobe RGB or, more generally, wide gamut monitors may benefit from selecting Adobe RGB here; other options may turn useful if you want to display less saturated colors.

- **Visible area crop mode:** selects visible (non-masked) area:
 - **Minimal:** use minimal crop, so maximal unmasked area (this mode was used in previous RawDigger versions)
 - **Basic vendor crop:** use vendor recommended crop. For DNG files: use DefaultCrop* tag values.
 - **User crop:** use *more crop*, for example: Aspect ratio crop used in Fujifilm cameras (for crops like 16:9 full RAW area is recorded and crop provided via metadata tags); DefaultUserCrop tag in DNG files (e.g. Leica in-camera crops).
- **RAW Display Options:** control of the raw mode display.

These parameters, same as the parameters for the RGB display, affect only the presentation of the image but not the “digital data”.

- **Masked Pixels:** show the masked part of the camera sensor, which does not participate in the image formation (some manufacturing companies use the name Optical Black instead of Masked Pixels). This part of the sensor is masked from light; hence, in some cases it is possible to estimate the noise level in the deepest shadows, the banding level and to calculate the black level. The invisible (masked) pixels are not included in the raw image in some cameras.

- **2x2 Pixels:** stretches each single-color (Bayer) pixel to the size of 2x2, making it possible to obtain an image more resembling the results after demosaicking. The figure below shows the result when this parameter is switched off:

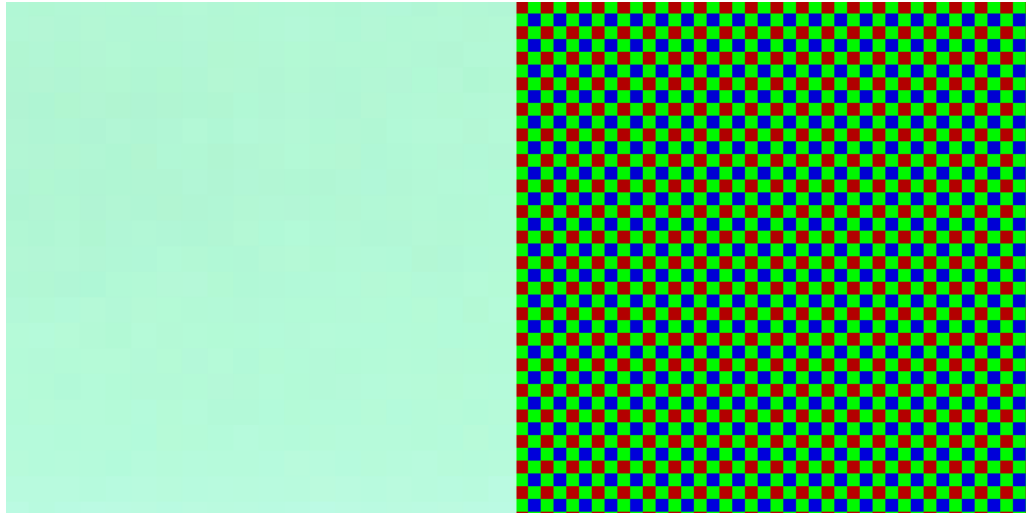


Fig. 6. White field shown in RAW mode with 2x2 Pixels set to ON (left) and OFF (right).

When the 2x2 Pixels mode is set to off, it is closer to reality for a Bayer sensor but moiré-prone on screen, unpleasant for the eye and the resultant picture is much darker. In the figure above, the white field looks green, since the white balance is not used in the raw viewing mode and the green channel in most cameras is more sensitive than other color channels.

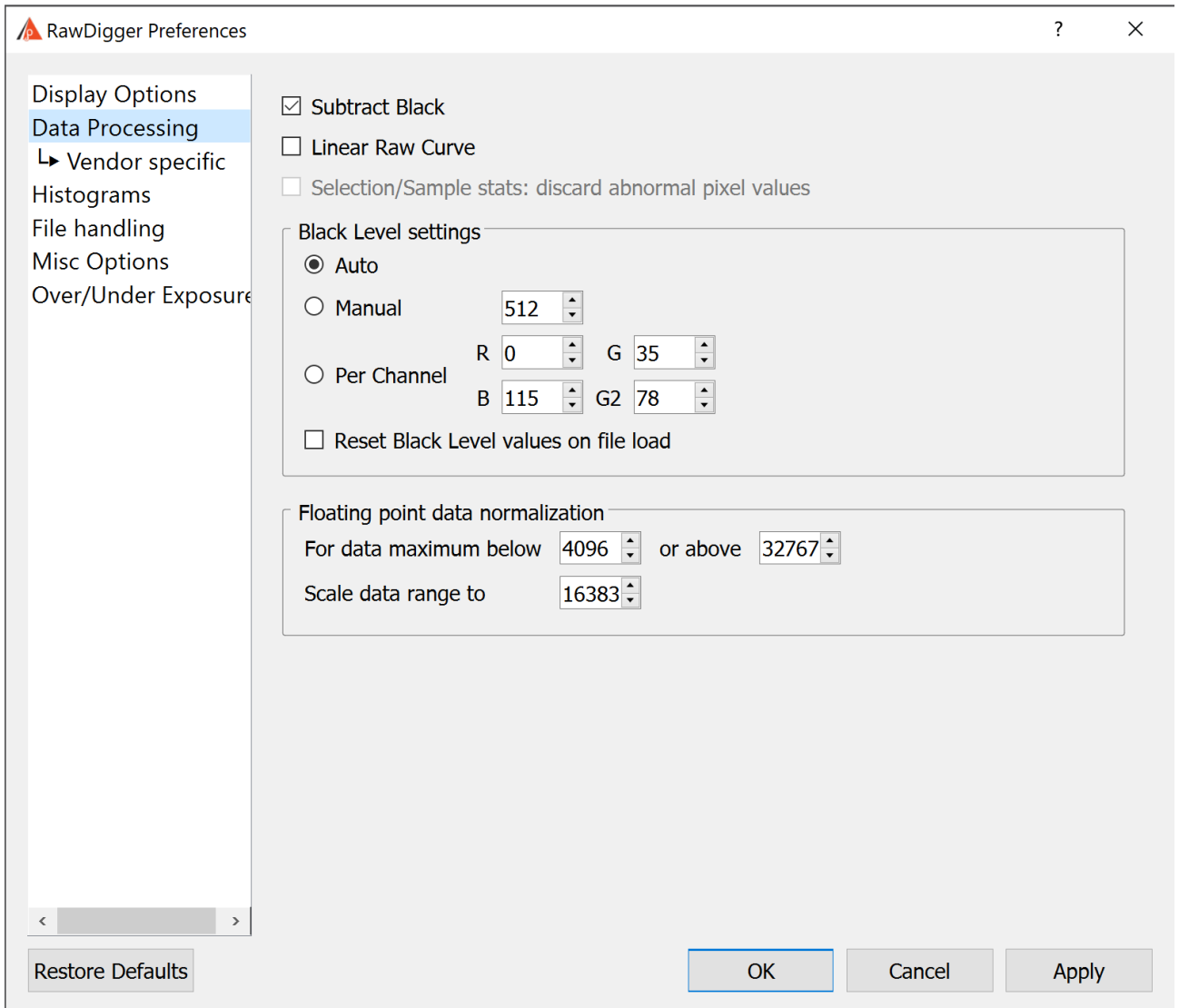
For the full-color and black-and-white RAW files (that is for the files with each pixel containing full information) this setting is ignored (processed as Off).

- **Gamma 2.2:** sets gamma correction for raw data. Without this correction, the image looks dark.
- **Autoscale:** sets the automatic scaling of raw data to the display the brightness range. Without this scaling, the image in the raw viewing mode will look very dark.
- **Display RGBG in grayscale** - all pixels in the raw file will be displayed using grayscale instead of their «colors». This mode is incompatible with 2x2 pixels display mode. If the file contains raw channels different from RGB(G), **Raw Composite** view mode will be substituted with grayscale, independent of the setting for **Display RGBG as Grayscale**. For non-Bayer (full-color) RAW files this setting is always processed as Off.
- **Mouse Pointer:** parameters for displaying the raw value under the mouse cursor.
 - **2x2 Active Area:** if this option is on, the window with the values under the mouse cursor shows the pixel values in a 2x2 square around the pointer (the Bayer sensor contains pixels of all 4 channels in that square). If this option is off, only the values corresponding to the pixel directly below the pointer are shown and the remaining three components are zero. For the full-color and black-and-white RAW files (that is for the files with each pixel containing full information) this setting is ignored (processed as Off).
- **Automatic exposure correction for RGB render:** turns on the automatic brightness correction of RGB representation.

- **Allow autoexposure to clip % (highlights)** controls the relative amount of pixels that can be clipped when autoexposure is applied, and thus it controls the amount of lightening applied through autoexposure.
- **Override white level:** Allows to set white level used for rendering to user-specified value.
- **Disable RGB rendering for files larger than NN Mpix:** disables RGB rendering and RGB display for large files which are too large. You can set these limits as you wish, but for 32-bit systems it is impractical to render RGB for 40Mpix or larger files, because memory is limited on these systems.
- **Disable processing for files larger than NN mbytes of RAW data:** disables loading of too large RAW files to avoid memory overuse. This setting is limited to:
 - **8GB** for x86/64 bit CPUs (for both Mac and Windows)
 - **4GB** for Apple Silicon (M1) CPUs (Mac only)
 - **1GB** for Windows/32 bit version.

Data Processing Tab

Parameters in this tab **do affect** the representation of raw values in windows with statistical data, histograms and samples table.



Raw Digger Preferences window: Data Processing Tab

The current version of RawDigger contains the following Data Processing parameters:

- **Subtract Black:** to subtract the “black level” (that is, the “dark current” value). The actual value to be subtracted is set in the Black Level block (see below).
- **Linear Raw Curve:** to use the linear tone curve instead of the nonlinear (compression) one. This parameter is important only for cameras and data formats that use the tone curve specified in EXIF data for raw data linearization (e.g., a significant number of Sony cameras).
- **Selection/Sample stats: discard abnormal pixel values:** if this setting is on (checkbox set), statistics for Selection and Sample discards 10% of highest and 10% of lowermost pixel values to filter off dust, scratches, small specular reflections, and other target/sensor defects.

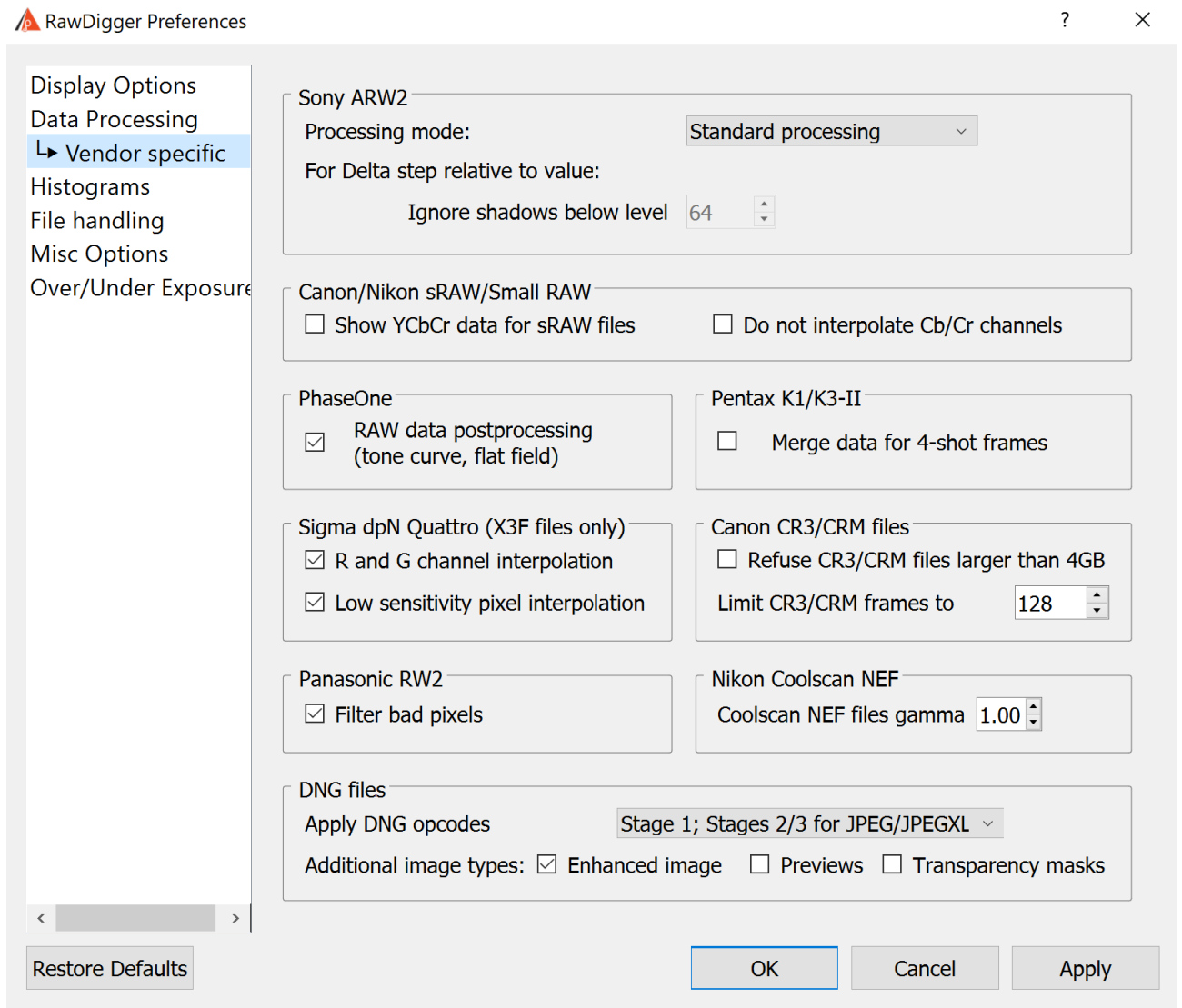
This mode is useful for creating measurements files from the shots of the profiling targets. It automatically filters off certain target and sensor defects to make measurement more meaningful. This mode is available only in RawDigger Profile Edition.

- **Black Level:** preferences for black subtraction mode.
These preferences can be formally attributed to the Data Processing block; however, since there are many customizable parameters here, this block is described separately.
 - **Auto:** the black level is set automatically. Depending on the file format, it will be either read from the EXIF data or calculated according to the black frame.
 - **Manual:** the black level is set manually; identical values are set for all channels.
 - **Per Channel:** the black level is set manually; different values for each channel are allowed.
- **Reset Black Level values on File Load:** when the next file is opened, the black level in the Manual and Per Channel input fields is set in accordance with the Auto variant but can be manually changed afterwards.
- For the automatically set Subtract Black Level, if BlackLevelRepeat* tag in DNG (or an analogous tag in files for Fuji X-Trans sensors) is present RawDigger takes the black level from large blocks (up to 64x64).
When manually setting the black level, (shared or by color channel) the aforementioned complex black level setting patterns are not used.
- **Floating Point Data Normalization** groups:
 - **For data maximum below ... or above ...** - if the actual data range _or_ the value of the maximum in the DNG file are out of this range.
 - **Scale data range to** – then all the data numbers (pixel values) will be multiplied by the same coefficient, to make the actual maximum equal to value set in this field.

See section **Processing of floating point data** above for details.

Data Processing -> Vendor specific Tab

Settings related to specific data formats or manufacturers only (that is, Sony ARW2, Panasonic, PhaseOne, Sigma dp2 Quattro, Canon/Nikon sRAW/Small RAW)



Raw Digger Preferences window: Data Processing -> Vendor specific Tab

- **Sony ARW2 processing options** – turns on special modes for processing lossy-compressed Sony ARW2 (cRAW):
 - **None (standard processing)** – the data will be processed standardly
 - **Only base pixels** – only the base pixel are used for output (the base pixels are the minimum and maximum for each color channel on a horizontal 32-pixel block). The values of other pixels ("delta-pixels") coded as rounded deltas from the minimum value in the block are set to zero.
 - **Only delta pixels** – only the "delta pixels" are used for the output (with "base" minimum value added to them), base pixels are set to zero so as to output only the delta pixels.
 - **Delta pixels relative to zero** – same as above but base minimum values are not added.

- **Delta step relative to value** – the output is the ratio of delta step to RAW value of the pixel. The units are pro mil (one per thousand). Those areas with large values of the ratio are the candidates for exhibiting posterization.
 - **Ignore shadows below level** – do not compute / display **Delta step relative to value** for the image areas where the RAW value is lower than this setting (deep image shadows are characterized by relatively large step values and so those areas are obvious candidates for posterization; while excluding such areas from the display of posterization helps to avoid display congestion).

Turning on any mode except None forbids using the RawSpeed library.

Turning on the "Delta pixels relative to zero" mode turns off the use of RawSpeed and Subtract Black Level, and additionally turns on Linear Tone Curve.

- **Show YCbCr data for Canon/Nikon sRAW files:** switches off the conversion of YCbCr data contained in Canon sRAW/Nikon D4s small RAW (NEF Size S) to RGB. The brightness in channel Y is provided as is. For Canon cameras, Cb/Cr channels are shifted by subtracting 8192 to place achromatic "gray point" for Cb/Cr channels in the middle of the range.

Gamma correction is not applied to Cb/Cr channel data irrespective of the gamma setting in Display Options tab.

For YCbCr data histogram, the display is set to show X-axis in EV scale, that is logarithmic rule. The user can switch it to linear rule if desired.

- **Do not interpolate Cb/Cr channels data (Canon/Nikon sRAW)**

The values for Cb/Cr channels in sRAW files are not defined for all pixels, but only in every second or every fourth pixel. Before conversion to RGB the missing values for Cb/Cr channels are interpolated. This option allows switching off such interpolation.

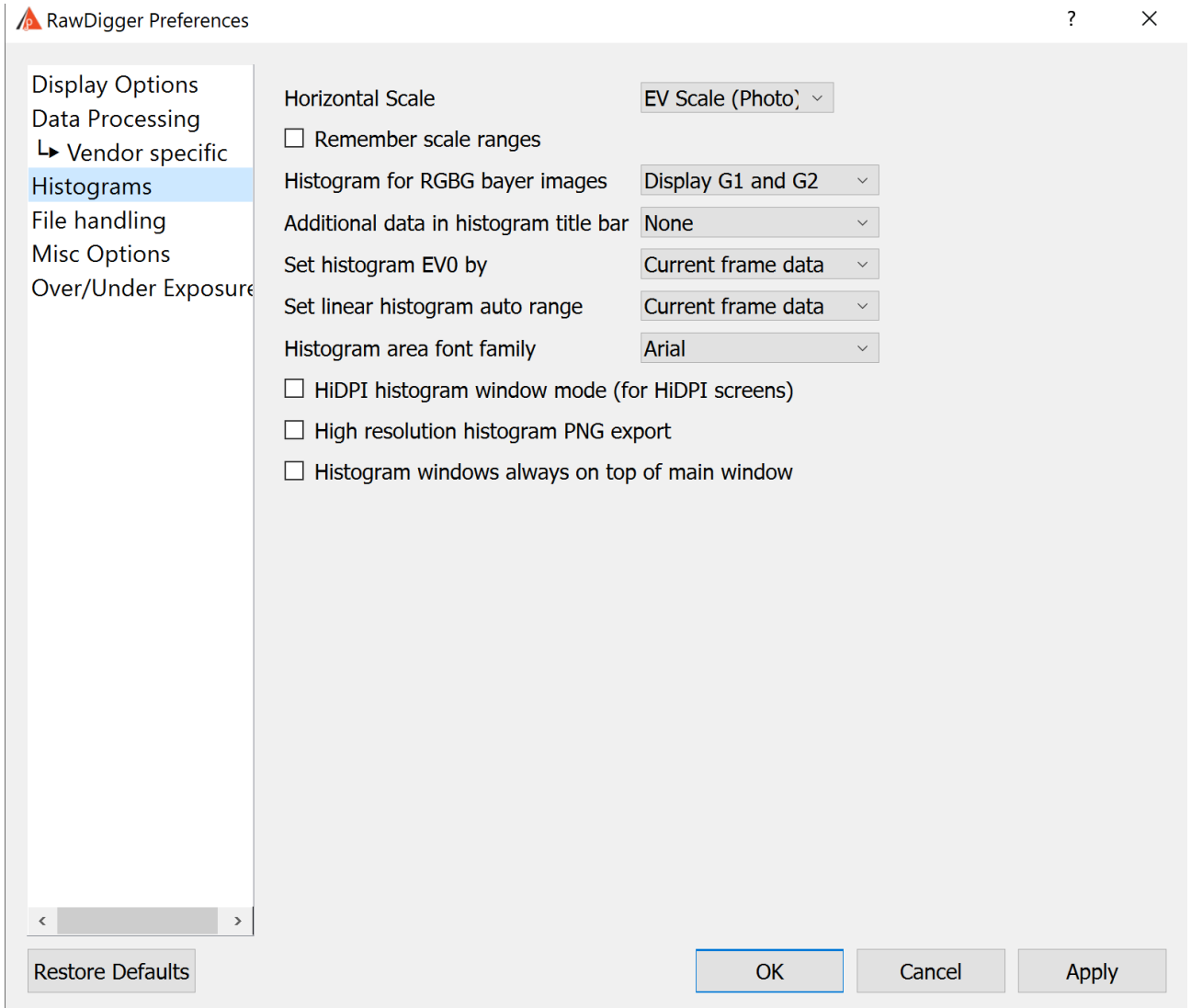
The option is available only together with the option **Show YCbCr data for Canon/Nikon sRAW files**.
- **Phase One RAW postprocessing:** switches raw data processing on and off based on metadata in raw file (bad pixels map, additional tonal curves, etc.)

This setting does not affect the display in 'RGB render' mode.
- **Pentax K3-II**
 - **Merge data for 4-shot frames** - turns on merging of 4 subframes in 4-shot files
- **Sigma dp2 Quattro options:**
 - **R and G channels interpolation** turns on the duplication of pixels in the R and G channels to form a 2x2 square.
 - **"Low sensitivity pixel interpolation"** – turns on the normalization of pixels with lower sensitivity found in the R and G channels (in the dp2 Quattro camera, every 64th pixel in the R and G channels has a sensitivity lowered by about 2 stops. What these pixels are used for is currently not certain, possibly for exposure control in overexposed areas).
- **Canon CR3/CRM files options:**
 - Refuse CR3/CRM files larger than 4GB (default: not checked)
 - Limit CR3/CRM frames to: (default: 128 frames, range 32...16384)

Both options limit the processing of (very large) files: either by size or by the number of frames read. These options are mutually exclusive.
- **Filter bad pixels on Panasonic files:** this enables the filtering off for bad pixels in the raw files from Panasonic and some other cameras (the files contain zeros in the place of bad pixels).

- **Nikon Coolscan NEF files gamma:** allows to set gamma value to Coolscan files according to scanning settings.
- **DNG Files**
 - **Apply DNG Opcodes:** what DNG opcodes should be applied to get RAW data (if such opcodes are present in the DNG file)
 - **Additional image types:** to allow the display of the secondary images contained in DNG file: Enhanced frame (that corresponds to Adobe Camera RAW/Lightroom: Enhance image), Previews (low-resolution/lossy compressed images) and Transparency masks.

Histograms Tab



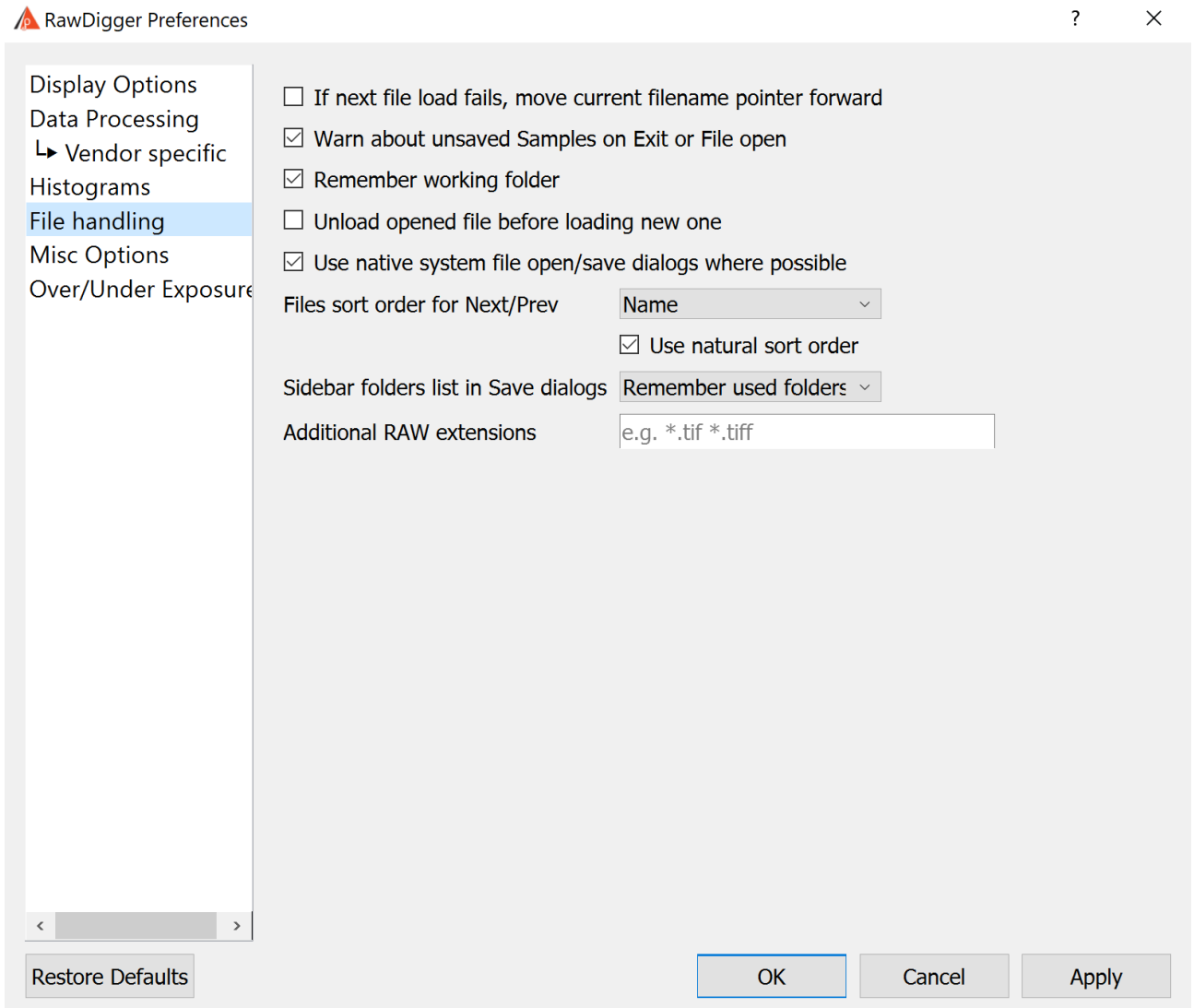
RawDigger Preferences window: Histograms Tab

- **Histogram Scale** – sets the horizontal scale for histogram window:
 - **Last Used** – the histogram is shown with the settings from the previous
 - **EV Scale (Photographic)** – photographic EV scale will be used
 - **Linear Scale** – linear scale will be used.
- **Remember scale ranges:** to store the settings for the histogram window (range of values, grid on vertical and horizontal axis).
If this option is on the very last change made to any of histogram windows will be stored. The settings stored here will be used when opening new histogram windows. Any change of parameters in one histogram window does not affect other histogram windows.
- **Histogram for RGBG bayer images** – controls the number of per-channel histograms for regular Bayer-type 2x2 raw data (2 green, 1 red, and 1 blue in a 2x2 pixel square):
 - **Display G1 and G2** – separate histogram for each of green channels are displayed.

- **G1 only** – only the histogram of the first green channel is displayed; the histogram for the second green channel is omitted.
- **Average G1 and G2** – an averaged histogram is displayed:
 - i. Bar heights – average between 2 green channels.
 - ii. Statistics minimum and maximum – absolute minimum and maximum of the data collected from both green channels.
 - iii. Number of unique values – the number of unique values found in the green channel where it is larger.
 - iv. Number of of pixels – an average between both green channels.
- **Additional data in Histogram title bar** – controls the display of additional shooting information on the title bar of the histogram window
 - **None** – no additional data is displayed.
 - **Exposure data** – shutter speed, lens aperture, and ISO speed are displayed.
 - **Camera model** – the make and the model of the camera are displayed.
 - **Exposure & Camera** – both exposure data and camera model from previous is displayed.
- **Set Histogram EV0 by** – sets the choice of the maximum value that is used for automatic calculation of midpoint (EV0). EV0 is calculated as 3 stops below the chosen maximum:
 - **Current frame data** – maximum value found in the currently opened frame is used.
 - **Camera data range** – maximum value is determined by the raw data bit width (theoretically possible range). (Some cameras will not use the whole range; *for some cameras the range changes with the change of ISO speed setting*).
- **Set linear histogram auto range** – sets the choice of the data scale used in histogram linear mode:
 - **Current frame data** – maximum value found in the currently opened frame is used.
 - **Camera data range** – maximum value is determined by the raw data bit width (theoretically possible range). (Some cameras will not use the whole range; *for some cameras the range changes with the change of ISO speed setting*).
- **Histogram area font family** – sets font used for graphics histogram area (axis values, statistics, etc).
- **HiDPI histogram window mode** – doubles the resolution of the histogram window display. This mode is recommended primarily for HiDPI monitors used with Apple Mac.
- **High resolution histogram PNG export** – doubles the resolution when exporting the histograms to PNG files.
- (Windows Only) **Histogram windows always on top of main window** – in this mode the histogram windows are always on top of the main program window.

File Handling Tab

This tab contains settings that affect the opening / processing of files

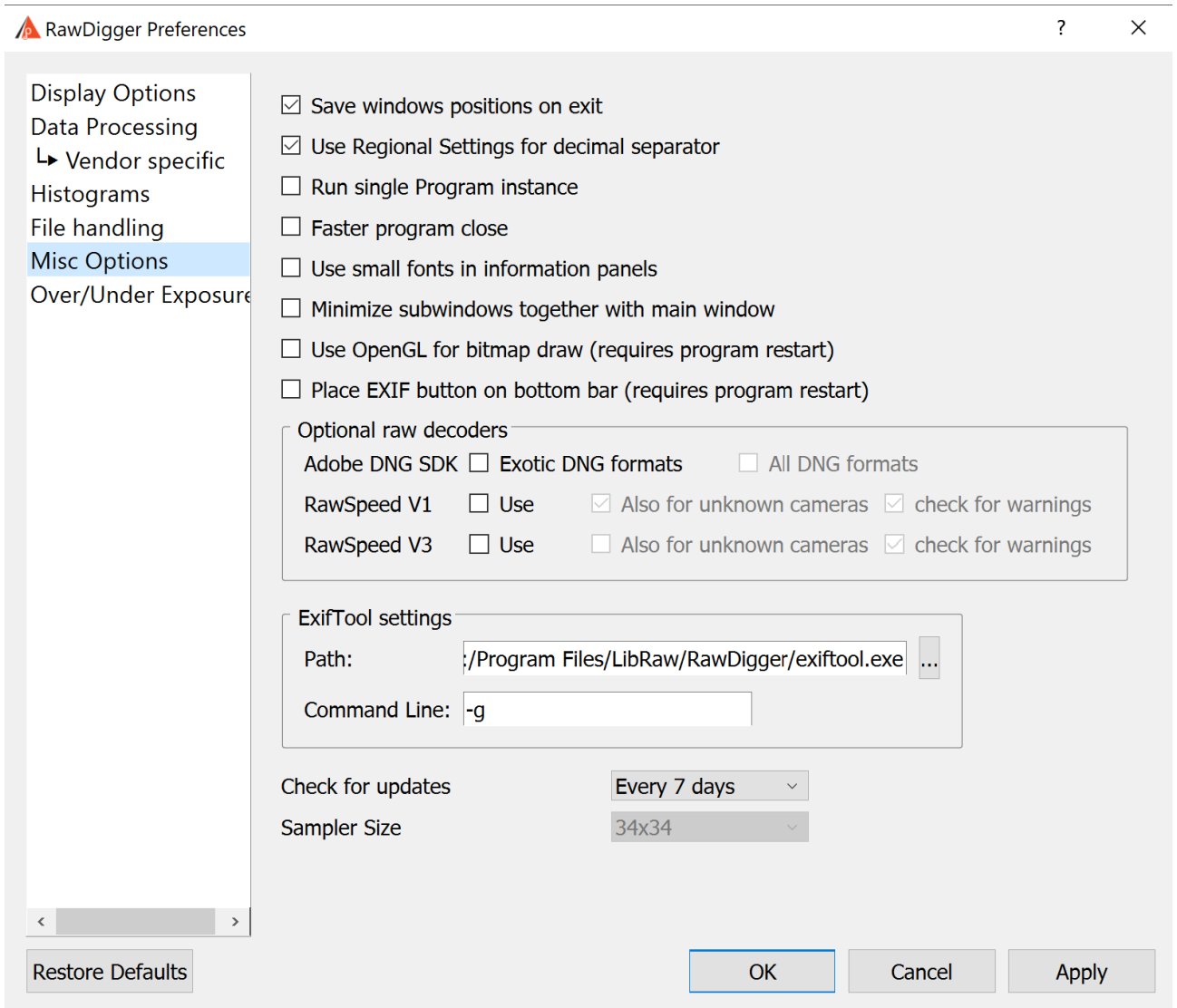


- **If next file load fails, move current filename pointer forward** – this setting controls RawDigger behavior if next file (via Menu – File – Next/Prev file, or via Ctrl-Arrow keys) load fails for whatever reason. With the checkbox on, RawDigger will allow subsequent Next/Prev file actions to count from new (failed to load) current file.
- **Warn about unsaved Samples on File Open/Exit.**
To switch unsaved sample on/off data warning.
- **Remember Working Folder:** to set the folder (directory) of the last opened raw file as working; next Open/Save dialogs will start in that working folder.
The setting is in effect for all consequent RawDigger runs, until re-defined.
- **Unload opened file before loading new one:** if this setting is active the file that is currently opened will be closed to free the memory.
This mode is useful while processing very large (40-50Mpix and more) files.
If this setting is active all samples and selections are not inherited for the new file.

- **Use native system file open/save dialogs where possible** – open/save file dialogues (except those dialogs with additional parameters), will use “native system dialogs” (the ones that are like those in Windows Explorer/Mac Finder).
- **File Sort order for Next/Prev:** to set the sorting order for Next file/Prev file operations:
 - **Name:** sort by the file name.
 - **Modify time:** sort by the file time stamp.
 - **Size:** sort by the file size.
 - **Unsorted:** files are sorted by the operational system, usually in the order they arrived in the directory.
- **Use natural sort order** – when sorting by filename, a *natural* sort order will be used with numericals (e.g., the order of files will be a1.ext a2.ext a10.ext). When this is turned off, an alphabetic sort order will be used (a1.ext a10.ext a2.ext).
- **Sidebar folders in “Save...” dialogs:** The user can now control the set of folders, which is displayed in the Sidebar of the “Save...” dialogs (that is, export of RAW data and saving the measurement tables). The choices are:
 - Remember used folders: to display the list of previously used folders (“traditional” behavior).
 - Standard list: include only Desktop, Documents, Pictures, TEMP, and Home folder.
 - Home Folder only
- **Additional RAW extensions** – to add extensions to the list of the file extensions known to RawDigger by default. These additional extensions will be allowed for Open and Prev/Next raw file open operations. The list of additional extensions is of the form of file name masks separated with a space, like *.tif *.bin.

Misc. Options Tab

This tab contains the settings that affect the program's behavior, but do not directly affect data processing or data display.



Raw Digger Preferences dialog, Misc. Options tab

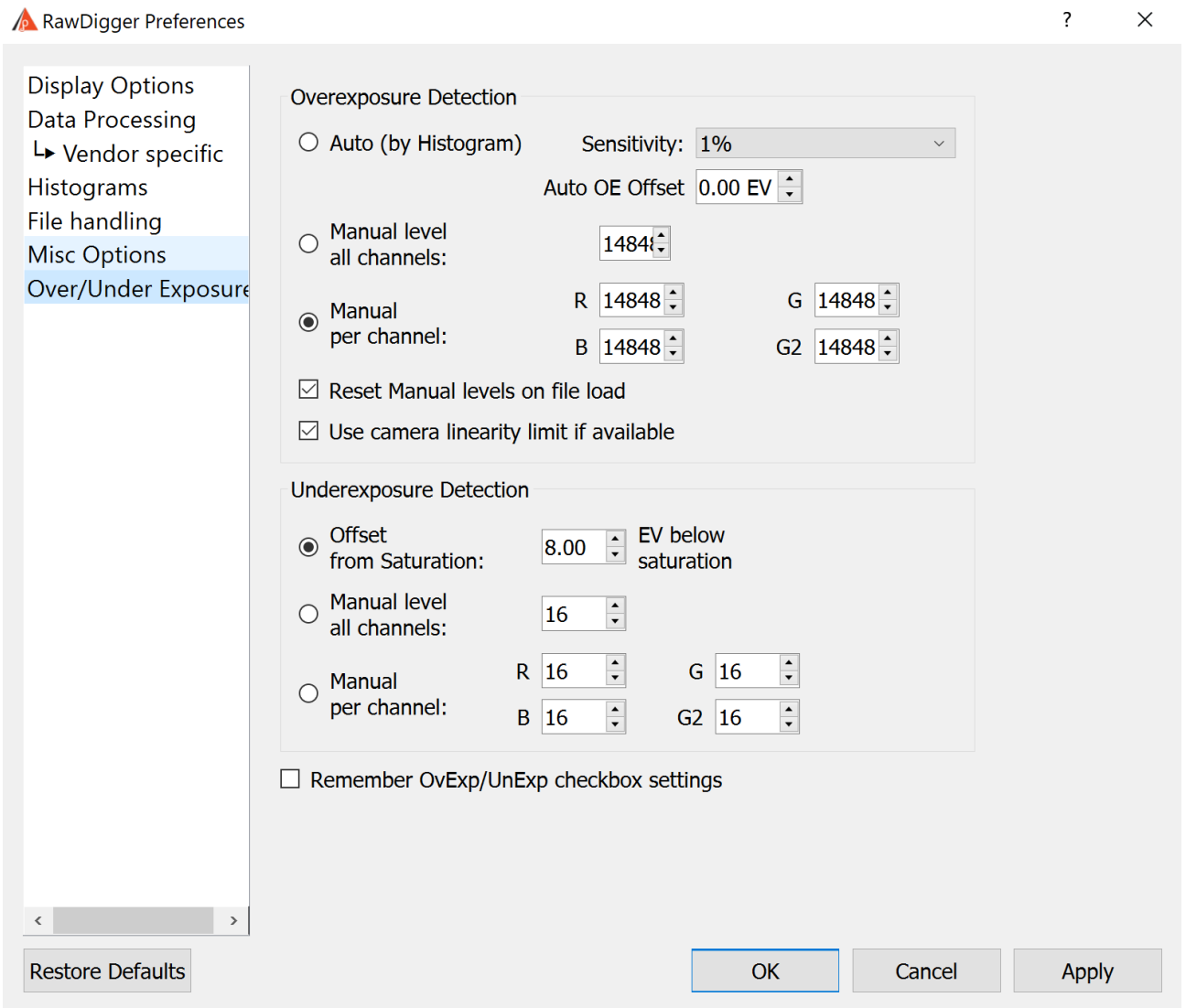
- Save windows positions on exit:** to store the position and dimensions of all the program windows on program exit. The positions and dimensions of the windows will be restored upon next program start; that is – when the program starts only the main window is opened, but when additional histogram and samples windows are created they will be positioned and sized according to the saved settings.
- Use Regional Settings for decimal separator:** Enables the use of the System Regional Settings to set the decimal separator. (Control Panel - regional Settings - Country). If those are set to use comma as the decimal separator - semicolon will be used as the field delimiter in CSV files. If the "Use Regional Settings" is turned off a period will be used as the decimal separator.

- **Run single Program Instance** (Windows only): to prevent running multiple copies of the program. While in this mode,
 - If a new RawDigger process is started while the raw file name is passed to RawDigger as a command line parameter the file will be opened in the already existing program window.
 - New RawDigger process will be immediately terminated after that.
- **Faster program close** (Windows only) – turns on faster program exit (resources are not released, operating system will do it for us).
- **Use small fonts in information panels** – decreases the font size and shrinks the gaps between the informational panels in the upper part of the program window. Useful for the lower resolution displays.
- **Put grid setup dialog on top of all windows** (Profile edition only) – makes Grid Setup window floating over all windows of all programs running.
- **Minimize subwindows together with main window** – If this setting is enabled, minimizing the main program window will also cause minimization of all other windows.
- **Use OpenGL for bitmap draw** – when this setting is turned on, OpenGL will be used to display images. This may work faster on computers with old CPUs.
- This setting is unavailable in Legacy versions.
- **Place EXIF button on bottom bar** – cleans space in metadata area by moving EXIF button on the program bottom bar (this setting will take effect after program restart).
- **Optional RAW decoders** – controls usage of optional RAW format decoders (besides LibRaw):
 - **Adobe DNG SDK:**
 - i. **Exotic DNG formats:** Use Adobe DNG SDK for 8-bit files and floating-point files
 - ii. **All DNG formats:** Use Adobe DNG SDK for all DNG files
 - **RawSpeed V1/V2** (RawSpeed opensource library decodes some formats much faster than LibRaw but has limited file format support):
 - i. **Use:** use the decoder
 - ii. **Also for unknown cameras:** use for all possibly supported cameras, not only explicitly listed in RawSpeed camera definitions file
 - iii. **Check for warnings:** check for RawSpeed reported warnings and display them to the user.
- **ExifTool Settings:** path to ExifTool utility and parameters to control it:
 - **Path:** the path to ExifTool executable module. The value is set during the install of RawDigger, but if you have a version of ExifTool that you prefer (for example, a more recent one) you can set the path to point to that version.
 - **Command Line:** parameters for ExifTool command line. RawDigger will pass those parameters to ExifTool adding `-h` for HTML output.
- **Check for updates:** this parameter schedules the checks for updates - at each program launch or once in every 1-3-7-15-30 days.
- **Sampler Settings:** sampler tool preferences
 - **Sampler Size:** selection of the sampling size area from a list (2x2, 6x6, 10x10, 18x18, 34x34, 66x66).
If you need a nonstandard sampling size, you can perform manual selection (Selection) and

then convert it to a sample (menu item Selection -> Convert Selection to Sample).
 Sampler Size Control is available only in Research и Profile editions of RawDigger.

Over/Under Exposure tab

This tab allows adjusting the settings that control how the areas of underexposure and overexposure are defined.



- **Overexposure Detection:** to control how the overexposure (saturation, blow-out) are defined
 - **Auto (by Histogram):** overexposure is determined by the analysis of the peaks on the histogram using the area of extreme highlights.
 - **Sensitivity** – the width of the area designated as overexposure
 - **Value on percent** (from the whole range of values offered by the camera) - sets the search radius for the sharp histogram peak.
 - **Full Well limited camera** - turns on an alternative algorithm of finding overexposure by the "fuzzy hump". This mode is intended for use with cameras, where the target

RAW-values are not limited by ADC but use close to the whole range of the sensor values.

- **Auto OE Offset** – lets you change the values set by the automatic algorithm. The shift must be set in photographic stops; negative shift lowers the boundary for detecting overexposure, positive shift raises it.
- **Manual level, all channels:** to set the single overexposure value for all color channels.
- **Manual per channel:** to set overexposure levels for each color channel independently.
- **Reset Manual levels on file load:** to use automatically computed (Auto, by histogram) levels when loading a new file; the computed levels will be set into the “manual” fields and used as such.
- **Use camera linearity limit if available:** If this setting is on, for the cameras with recommended raw maximum white value contained in metadata this value takes precedence when detecting overexposure.
- **Underexposure Detection: the settings which control how the areas of underexposure are determined**
 - **Offset from Saturation: the underexposure level is defined as an offset (in EV) relative to overexposure (saturation) level.**

If while setting the level of overexposure the shift from the automatic level was used, this same shift will be used for the underexposure boundary.
 - **Manual level, all channels:** to set the single underexposure level for all color channels.
 - **Manual, per channel:** to set the underexposure levels independently for each color channel.
- **Remember OvExp/UnExp checkbox settings:** to store the settings for over- and underexposed areas display.

Support of non-standard cameras

RawDigger can be used for the display and analysis of images from “engineering” cameras, which are saved in the form of “sensor data dumps” without any other additional metadata.

A series of such cameras are already directly supported by the program (RawDigger contains an internal table with the necessary data); to support other (arbitrary) sensors, one has to add a description of the structure of the sensor’s data into the Windows Registry (on Windows) or OS X defaults (on Mac OS X).

To do this one must:

Windows: prepare a registry-script with content similar to the following:

```
[HKEY_CURRENT_USER\Software\LibRaw LLC\CustomCameras]

"Camera01"="24096096,4008,3006, 0, 0, 0, 0,0,148,0,0,Dalsa, FTF4052C 4:3,0"
```

And run it in Windows Explorer.

OS X: run a command in the Terminal, similar to the following one-liner:

```
defaults write com.libraw-llc.CustomCameras "Camera01" "24096096,4008,3006, 0, 0, 0, 0,0,148,0,0,Dalsa, FTF4052C 4:3"
```

In both cases:

Camera01 (or Camera02 ... Camera64) – the “number line” in the table, up to 64 records of this type are supported.

The line “24096096,4008,3006, 0, 0, 0, 0,0,148,0,0,Dalsa, FTF4052C 4:3,0” defines the format of the camera’s data and consists of 14 fields separated by commas (a note for engineers: the format of this line is completely analogous to the line in the “sensor dump” table’s description in ddraw.c with the one difference being that the CFA filter’s format is set in base 10):

1. The exact size of the file in bytes (in this example – 24096096). This is the only criterion by which RawDigger recognizes a data “format”, files of a different size will be ignored.
2. The width of the sensor in pixels. Put the entire width, including the “black frame” in this field.
3. The height of the sensor in pixels, including the black frame.
4. The width of the black frame at the left edge of the sensor (in pixels)
5. The width (height) of the black frame at the top.
6. The width of the black frame at the right edge.
7. The width (height) of the black frame at the bottom.
8. Additional parameters for the file decoding subprogram (see below).
9. The Bayer filter CFA format, with the byte field taking one of the following values:
 - 22 – BGGR
 - 97 – GRBG
 - 73 – GBRG
 - 148 – RGGB
 - 180 - GMYC
10. The amount of unused bit data (for example, if 14-bit data is recorded in a 16-bit format)
11. Additional metadata, bit mask.
 - a. Bit 0 – find a .JPG file with the same name and read the EXIF data from it.
 - b. Bit 1 – filter (average neighbors) for pixels with values of zero
 - c. Bits 2-4 – the orientation of the image (0=do not rotate, 3=180, 5=90CCW, 6=90CW)
12. Camera manufacturer
13. Camera model
14. The offset of the beginning of the sensor data from the beginning of the file (the value range is 0-65534, the special value 65535 means that “the rows are going in the opposite direction”).

8, 10, 12, and 16-bit data formats are supported, the amount of bits is calculated as (the size of the file minus the offset from the beginning of the data)/number of pixels.

Depending on the bit-ness of the data, the 8th field (“additional parameters for the file decoding subprogram”) can accept the following values for 10-bit data:

- 1: “4 pixels in 5 bytes” packing is used
- 0: “6 pixels in 8 bytes” packing is used

Supported Cameras

For the list of supported cameras please see below.

RawDigger can operate with some other cameras that are not yet listed; however we can't guarantee that the results will be accurate. For those cameras that are not fully supported the colors may be wrong as displayed in RGB-render mode, also the width of the masked zone can be off; etc.

- ASUS
 - ZenPhone4
 - ZenPhone6
- AVT
 - F-080C
 - F-145C
 - F-201C
 - F-510C
 - F-810C
- Adobe Digital Negative (DNG)
- AgfaPhoto DC-833m
- Alcatel 5035D
- Apple
 - iPad Pro
 - iPhone SE
 - iPhone 6s
 - iPhone 6 plus
 - iPhone 7
 - iPhone 7 plus
 - iPhone 8
 - iPhone 8 plus
 - iPhone X
 - iPhone 12 Pro
 - iPhone 12 Pro Max
 - iPhone 13
 - iPhone 14
 - iPhone 14 Plus
 - iPhone 14 Pro
 - iPhone 14 Pro Max
 - iPhone 15
 - iPhone 15 Plus
 - iPhone 15 Pro
 - iPhone 15 Pro Max
 - QuickTake 100
 - QuickTake 150
 - QuickTake 200
- AutelRobotics
 - XB015
 - XT705 (EVO II)
 - XL720 (EVO Lite+)
- BQ Aquarius U
- Baumer TXG14

- BlackMagic
 - Cinema Camera
 - Micro Cinema Camera
 - Pocket Cinema Camera
 - Production Camera 4k
 - URSA
 - URSA Mini 4k
 - URSA Mini 4.6k
 - URSA Mini Pro 4.6k
- CLAUSS pix500
- Canon
 - PowerShot 600
 - PowerShot A5
 - PowerShot A5 Zoom
 - PowerShot A50
 - PowerShot A410 (CHDK hack)
 - PowerShot A460 (CHDK hack)
 - PowerShot A470 (CHDK hack)
 - PowerShot A480 (CHDK hack)
 - PowerShot A530 (CHDK hack)
 - PowerShot A540 (CHDK hack)
 - PowerShot A550 (CHDK hack)
 - PowerShot A560 (CHDK hack)
 - PowerShot A570 IS (CHDK hack)
 - PowerShot A590 IS (CHDK hack)
 - PowerShot A610 (CHDK hack)
 - PowerShot A620 (CHDK hack)
 - PowerShot A630 (CHDK hack)
 - PowerShot A640 (CHDK hack)
 - PowerShot A650 IS (CHDK hack)
 - PowerShot A710 IS (CHDK hack)
 - PowerShot A720 IS (CHDK hack)
 - PowerShot A3300 IS (CHDK hack)
 - PowerShot D10 (CHDK hack)
 - PowerShot ELPH 130 IS / IXUS 140 / IXY 110F (CHDK hack)
 - PowerShot ELPH 160 / IXUS 160 (CHDK hack)
 - PowerShot Pro70
 - PowerShot Pro90 IS
 - PowerShot Pro1
 - PowerShot G1
 - PowerShot G1 X
 - PowerShot G1 X Mark II
 - PowerShot G1 X Mark III
 - PowerShot G2
 - PowerShot G3
 - PowerShot G3 X
 - PowerShot G5
 - PowerShot G5 X
 - PowerShot G5 X Mark II

- PowerShot G6
- PowerShot G7 (CHDK hack)
- PowerShot G7 X
- PowerShot G7 X Mark II
- PowerShot G7 X Mark III
- PowerShot G9
- PowerShot G9 X
- PowerShot G9 X Mark II
- PowerShot G10
- PowerShot G11
- PowerShot G12
- PowerShot G15
- PowerShot G16
- PowerShot S2 IS (CHDK hack)
- PowerShot S3 IS (CHDK hack)
- PowerShot S5 IS (CHDK hack)
- PowerShot SD300 / IXUS 40 / IXY Digital 50 (CHDK hack)
- PowerShot SD750 / IXUS 75 / IXY Digital 90 (CHDK hack)
- PowerShot SD900 / Digital IXUS 900 Ti / IXY Digital 1000 (CHDK hack)
- PowerShot SD950 IS / Digital IXUS 960 IS / IXY Digital 2000 IS (CHDK hack)
- PowerShot SD1200 IS / Digital IXUS 95 IS / IXY Digital 110 IS (CHDK hack)
- PowerShot S30
- PowerShot S40
- PowerShot S45
- PowerShot S50
- PowerShot S60
- PowerShot S70
- PowerShot S90
- PowerShot S95
- PowerShot S100
- PowerShot S110
- PowerShot S120
- PowerShot SX1 IS
- PowerShot SX40 HS (CHDK hack, CR2)
- PowerShot SX50 HS
- PowerShot SX60 HS
- PowerShot SX70 HS
- PowerShot SX100 IS (CHDK hack)
- PowerShot SX110 IS (CHDK hack)
- PowerShot SX120 IS (CHDK hack)
- PowerShot SX130 IS (CHDK hack)
- PowerShot SX160 IS (CHDK hack)
- PowerShot SX220 HS (CHDK hack)
- PowerShot SX510 HS (CHDK hack)
- PowerShot SX710 HS (CHDK hack)
- PowerShot SX10 IS (CHDK hack)
- PowerShot SX20 IS (CHDK hack)
- PowerShot SX30 IS (CHDK hack)
- PowerShot V1

- EOS R
- EOS Ra
- EOS RP
- EOS R1
- EOS R3
- EOS R5
- EOS R5 C
- EOS R5 Mark II
- EOS R6
- EOS R6 Mark II
- EOS R6 Mark III
- EOS R7
- EOS R8
- EOS R10
- EOS R50
- EOS R50 V
- EOS R100
- EOS D30
- EOS D60
- EOS 5DS
- EOS 5DS R
- EOS 5D
- EOS 5D Mark II
- EOS 5D Mark III
- EOS 5D Mark IV
- EOS 6D
- EOS 6D Mark II
- EOS 7D
- EOS 7D Mark II
- EOS 10D
- EOS 20D
- EOS 20Da
- EOS 30D
- EOS 40D
- EOS 50D
- EOS 60D
- EOS 60Da
- EOS 70D
- EOS 77D / 9000D
- EOS 80D
- EOS 90D
- EOS 100D / Rebel SL1 / Kiss X7
- EOS 200D / Rebel SL2 / Kiss X9
- EOS 250D / 200D II / Rebel SL3 / Kiss X10
- EOS 300D / Digital Rebel / Kiss Digital
- EOS 350D / Digital Rebel XT / Kiss Digital N
- EOS 400D / Digital Rebel XTi / Kiss Digital X
- EOS 450D / Digital Rebel XSi / Kiss X2
- EOS 500D / Rebel T1i / Kiss X3

- EOS 550D / Rebel T2i / Kiss X4
- EOS 600D / Rebel T3i / Kiss X5
- EOS 650D / Rebel T4i / Kiss X6i
- EOS 700D / Rebel T5i / Kiss X7i
- EOS 750D / Rebel T6i / Kiss X8i
- EOS 760D / Rebel T6S / 8000D
- EOS 800D / Rebel T7i / Kiss X9i
- EOS 850D / Rebel T8i / Kiss X10i
- EOS 1000D / Digital Rebel XS / Kiss F
- EOS 1100D / Rebel T3 / Kiss X50
- EOS 1200D / Kiss X70 / REBEL T5 / Hi
- EOS 1300D / Rebel T6 / Kiss X80
- EOS 1500D / 2000D / Rebel T7 / Kiss X90
- EOS 3000D / 4000D / Rebel T100
- EOS D2000
- EOS C50
- EOS M
- EOS M2
- EOS M3
- EOS M5
- EOS M6
- EOS M6 Mark II
- EOS M10
- EOS M50 / Kiss M
- EOS M50 Mark II / Kiss M2
- EOS M100
- EOS M200
- EOS-1D C
- EOS-1D X
- EOS-1D X Mark II
- EOS-1D X Mark III
- EOS-1D
- EOS-1D Mark II
- EOS-1D Mark II N
- EOS-1D Mark III
- EOS-1D Mark IV
- EOS-1Ds
- EOS-1Ds Mark II
- EOS-1Ds Mark III
- Casio
 - QV-2000UX (secret menu hack)
 - QV-3000EX (secret menu hack)
 - QV-3500EX (secret menu hack)
 - QV-4000 (secret menu hack)
 - QV-5700 (secret menu hack)
 - QV-R41
 - QV-R51
 - QV-R61
 - EX-F1

RawDigger User Guide

- EX-FC300S
- EX-FC400S
- EX-FH20
- EX-FH25
- EX-FH100
- EX-S20 / M20
- EX-S100
- EX-Z4
- EX-Z50
- EX-Z500
- EX-Z55
- EX-Z60
- EX-Z75
- EX-Z750
- EX-Z8
- EX-Z850
- EX-Z1050
- EX-ZR100
- EX-Z1080
- EX-ZR700
- EX-ZR710
- EX-ZR750
- EX-ZR800
- EX-ZR850
- EX-ZR1000
- EX-ZR1100
- EX-ZR1200
- EX-ZR1300
- EX-ZR1500
- EX-ZR3000
- EX-ZR3100
- EX-ZR3200
- EX-ZR3500
- EX-ZR3600
- EX-ZR3700
- EX-ZR4000 / 5000
- EX-ZR4100 / 5100
- EX-100
- EX-100F
- EX-100PRO
- EX-10
- EX-P505 (secret menu hack)
- EX-P600 (secret menu hack)
- EX-P700 (secret menu hack)
- Contax N Digital
- Creative PC-CAM 600
- DJI
 - 4384x3288
 - Inspire 3

RawDigger User Guide

- Mavic Air
- Mavic Air 2
- Mavic Air 2S
- Mavic Air 3
- Mavic Mini 2
- Mavic Mini 3
- Mavic Mini 3 Pro
- Mavic 2 Pro
- Mavic 3
- Mavic 3 Classic
- Mavic 3 Pro
- Osmo Action
- Pocket
- Phantom4 Pro/Pro+
- Zenmuse X5
- Zenmuse X5R
- DXO One
- Digital Bolex
 - D16
 - D16M
- Epson
 - R-D1
 - R-D1s
 - R-D1x
- Eyedea E1
- Foculus 531C
- FujiFilm
 - DBP for GX680 / DX-2000
 - E550
 - E900
 - F500EXR / F505EXR
 - F550EXR
 - F600EXR / F605EXR
 - F700
 - F710
 - F770EXR / F775EXR
 - F800EXR
 - F810
 - F900EXR
 - S2Pro
 - S3Pro
 - S5Pro
 - S20Pro
 - S1
 - S100FS
 - S5000
 - S5100 / S5500
 - S5200 / S5600
 - S6000fd / S6500fd

RawDigger User Guide

- S7000
- S9000 / S9500
- S9100 / S9600
- S200EXR / S205EXR
- SL1000
- HS10/HS11
- HS20EXR / HS22EXR
- HS30EXR / HS33EXR / HS35EXR
- HS50EXR
- GFX 50S
- GFX 50S II
- GFX 50R
- GFX 100
- GFX 100 II
- GFX 100RF
- GFX 100S
- GFX 100S II
- X-Pro1
- X-Pro2
- X-Pro3
- X-S1
- X-S20
- XQ1
- XQ2
- X100
- X100F
- X100S
- X100T
- X100V
- X100VI
- X10
- X20
- X30
- X70
- X-A1
- X-A2
- X-A3
- X-A5
- X-A7
- X-A10
- X-A20
- X-E1
- X-E2
- X-E2S
- X-E3
- X-E4
- X-E5
- X-M1
- X-M5

- XF1
- XF10
- X-H1
- X-H2
- X-H2S
- X-T1
- X-S10
- X-T1 Graphite Silver
- X-T2
- X-T3
- X-T4
- X-T5
- X-T10
- X-T20
- X-T30
- X-T30 II
- X-T30 III
- X-T50
- X-T100
- X-T200
- IS-1
- GITUP
 - GIT2
 - GIT2P
 - G3 DUO (16:9 mode only)
- Gione E7
- GoPro
 - Fusion
 - HERO5
 - HERO6
 - HERO7
 - HERO8
 - HERO9
 - HERO10
 - HERO11
 - HERO12
- Google
 - Pixel
 - Pixel XL
 - Pixel 3a
 - Pixel 4 XL
 - Pixel 4a (5G)
 - Pixel 5
 - Pixel 7a
 - Pixel 8 Pro
 - Pixel 9 Pro
 - Pixel 9 Pro XL
 - Pixel 9 Pro Fold
 - Pixel 10

- Pixel 10 Pro XL
- HTC
 - UltraPixel
 - MyTouch 4G
 - One (A9)
 - One (M9)
 - 10
 - U12
- Hasselblad
 - H2D-22
 - H2D-39
 - H3DII-22
 - H3DII-31
 - H3DII-39
 - H3DII-50
 - H3D-22
 - H3D-31
 - H3D-39
 - H4D-60
 - H4D-50
 - H4D-40
 - H4D-31
 - H5D-60
 - H5D-50
 - H5D-50c
 - H5D-40
 - H6D-100c
 - A6D-100c
 - CFV
 - CFV-50
 - CFV-50c
 - CFV II 50C
 - CFV-100c
 - CFH
 - CF-22
 - CF-31
 - CF-39
 - V96C
 - L1D-20c (DJI Mavic 2 Pro)
 - Lusso
 - Lunar
 - True Zoom
 - Stellar
 - Stellar II
 - HV
 - X1D
 - X1D II 50C
 - X2D 100C
 - X2D II 100C

- Huawei
 - P8 Lite (PRA-LX1)
 - P9 (EVA-L09/AL00)
 - P10 (VTR-L09)
 - P10+ (VKY-L09)
 - P10 Lite (WAS-LX1A)
 - P20 (EML-L09)
 - P20 Lite (ANE-LX1)
 - P20 Pro (CLT-L29/L09)
 - P30 Pro (VOG-L29)
 - Honor6a
 - Honor7a pro
 - Honor8 (FRD-L09)
 - Honor9
 - Honor10
 - Honor20
 - Honor View 10 (BKL-L09)
 - Honor View 20 (PCT-L29)
 - Honor 20 Pro (YAL-L41)
 - Mate8 (NXT-L29)
 - Mate10 (BLA-L29)
 - Mate20 Pro (LYA-L29)
 - Mate20 Lite (SNE-LX1)
- ISG 2020x1520
- Ikonoskop
 - A-Cam dII Panchromatic
 - A-Cam dII
- Imacon
 - Ixpress 96, 96C
 - Ixpress 384, 384C (single shot only)
 - Ixpress 132C
 - Ixpress 528C (single shot only)
- JaiPulnix
 - BB-500CL
 - BB-500GE
- Kandao QooCam 8K
- Kinefinity
 - KineMINI
 - KineRAW Mini
 - KineRAW S35
- Kodak
 - DC20
 - DC25
 - DC40
 - DC50
 - DC120
 - DCS200
 - DCS315C
 - DCS330C

RawDigger User Guide

- DCS420
- DCS460
- DCS460M
- DCS520C
- DCS560C
- DCS620C
- DCS620X
- DCS660C
- DCS660M
- DCS720X
- DCS760C
- DCS760M
- EOSDCS1
- EOSDCS3
- NC2000
- ProBack
- PB645C
- PB645H
- PB645M
- DCS Pro 14n
- DCS Pro 14nx
- DCS Pro SLR/c
- DCS Pro SLR/n
- C330
- C603
- P850
- P880
- PIXPRO AZ901
- PIXPRO S-1
- Z980
- Z981
- Z990
- Z1015
- KAI-0340
- Konica
 - KD-400Z
 - KD-510Z
- LG
 - G3
 - G4
 - G5 (H850)
 - G6
 - V20 (F800K)
 - V20 (H910)
 - VS995
- Leaf
 - AFi 5
 - AFi 6
 - AFi 7

- AFi-II 6
- AFi-II 7
- AFi-II 10
- AFi-II 10R
- Aptus-II 5
- Aptus-II 6
- Aptus-II 7
- Aptus-II 8
- Aptus-II 10
- Aptus-II 12
- Aptus-II 12R
- Aptus 17
- Aptus 22
- Aptus 54S
- Aptus 65
- Aptus 65S
- Aptus 75
- Aptus 75S
- Cantare
- Cantare XY
- CatchLight
- CMost
- Credo 40
- Credo 50
- Credo 60
- Credo 80
- DCB-II
- Valeo 6
- Valeo 11
- Valeo 17
- Valeo 17wi
- Valeo 22
- Valeo 22wi
- Volare
- Leica
 - C (Typ 112)
 - CL
 - C-Lux / CAM-DC25
 - Digilux 2
 - Digilux 3
 - Digital-Modul-R
 - D-LUX2
 - D-LUX3
 - D-LUX4
 - D-LUX5
 - D-LUX6
 - D-LUX7
 - D-Lux8
 - D-Lux (Typ 109)

RawDigger User Guide

- M8
- M8.2
- M9
- M10
- M10-D
- M10-P
- M10-R
- M10 Monochrom
- M11
- M11 Monochrom
- M (Typ 240)
- M (Typ 262)
- Monochrom (Typ 240)
- Monochrom (Typ 246)
- M-D (Typ 262)
- M-E
- M-P
- M EV1
- R8
- Q (Typ 116)
- Q-P
- Q2
- Q2 Monochrom
- Q3
- Q3 43
- Q3 Monochrom
- S
- S2
- S3
- S (Typ 007)
- SL (Typ 601)
- SL2
- SL2-S
- SL3
- T (Typ 701)
- TL
- TL2
- X1
- X (Typ 113)
- X2
- X-E (Typ 102)
- X-U (Typ 113)
- V-LUX1
- V-LUX2
- V-LUX3
- V-LUX4
- V-LUX5
- V-Lux (Typ 114)
- X VARIO (Typ 107)

RawDigger User Guide

- Lenovo a820
- Logitech Fotoman Pixtura
- Mamiya ZD
- Matrix 4608x3288
- Meizy MX4
- Micron 2010
- Minolta
 - RD175 / Agfa ActionCam
 - DiIMAGE 5
 - DiIMAGE 7
 - DiIMAGE 7i
 - DiIMAGE 7Hi
 - DiIMAGE A1
 - DiIMAGE A2
 - DiIMAGE A200
 - DiIMAGE G400
 - DiIMAGE G500
 - DiIMAGE G530
 - DiIMAGE G600
 - DiIMAGE Z2
 - Alpha/Dynax/Maxxum 5D
 - Alpha/Dynax/Maxxum 7D
- Motorola
 - PIXL
 - Moto G (5S)
 - Moto G7 Play
- Nikon
 - D1
 - D1H
 - D1X
 - D2H
 - D2Hs
 - D2X
 - D2Xs
 - D3
 - D3s
 - D3X
 - D4
 - D4s
 - D40
 - D40X
 - D5
 - D50
 - D6
 - D60
 - D70
 - D70s
 - D80
 - D90

RawDigger User Guide

- D100
- D200
- D300
- D300s
- D500
- D600
- D610
- D700
- D750
- D780
- D800
- D800E
- D810
- D810A
- D850
- D3000
- D3100
- D3200
- D3300
- D3400
- D3500
- D5000
- D5100
- D5200
- D5300
- D5500
- D5600
- D7000
- D7100
- D7200
- D7500
- Df
- Z 5
- Z 5 II
- Z 6
- Z 6 II
- Z 6 III
- Z 7
- Z 7 II
- Z 8
- Z 9
- Z 30
- Z 50
- Z 50 II
- Z f
- Z fc
- ZR
- 1 AW1
- 1 J1

RawDigger User Guide

- 1 J2
- 1 J3
- 1 J4
- 1 J5
- 1 S1
- 1 S2
- 1 V1
- 1 V2
- 1 V3
- Coolpix 700 ("DIAG RAW" hack)
- Coolpix 800 ("DIAG RAW" hack)
- Coolpix 880 ("DIAG RAW" hack)
- Coolpix 900 ("DIAG RAW" hack)
- Coolpix 950 ("DIAG RAW" hack)
- Coolpix 990 ("DIAG RAW" hack)
- Coolpix 995 ("DIAG RAW" hack)
- Coolpix 2100 ("DIAG RAW" hack)
- Coolpix 2500 ("DIAG RAW" hack)
- Coolpix 3200 ("DIAG RAW" hack)
- Coolpix 3700 ("DIAG RAW" hack)
- Coolpix 4300 ("DIAG RAW" hack)
- Coolpix 4500 ("DIAG RAW" hack)
- Coolpix 5000
- Coolpix 5400
- Coolpix 5700
- Coolpix 8400
- Coolpix 8700
- Coolpix 8800
- Coolpix A
- Coolpix A1000
- Coolpix B700
- Coolpix P330
- Coolpix P340
- Coolpix P950
- Coolpix P6000
- Coolpix P1000
- Coolpix P1100
- Coolpix P7000
- Coolpix P7100
- Coolpix P7700
- Coolpix P7800
- Coolpix S6 ("DIAG RAW" hack)
- Coolscan NEF
- Nokia
 - 7 Plus
 - 8.3 5G
 - 9
 - N95
 - X2

RawDigger User Guide

- 1200x1600
- Lumia 930
- Lumia 950 XL
- Lumia 1020
- Lumia 1520
- OM
 - Digital Solutions OM-1
 - Digital Solutions OM-1 Mark II
 - Digital Solutions OM-3
 - Digital Solutions OM-5
 - Digital Solutions OM-5 Mark II
- Olympus
 - AIR A01
 - C-3030Z
 - C-5050Z
 - C-5060WZ
 - C-7070WZ
 - C-70Z / C-7000Z
 - C-740UZ
 - C-770UZ
 - C-8080WZ
 - X200 / D-560Z / C-350Z
 - E-1
 - E-3
 - E-5
 - E-10
 - E-20 / E-20N / E-20P
 - E-30
 - E-300
 - E-330
 - E-400
 - E-410
 - E-420
 - E-450
 - E-500
 - E-510
 - E-520
 - E-600
 - E-620
 - E-P1
 - E-P2
 - E-P3
 - E-P5
 - E-P7
 - E-PL1
 - E-PL1s
 - E-PL2
 - E-PL3
 - E-PL5

RawDigger User Guide

- E-PL6
- E-PL7
- E-PL8
- E-PL9
- E-PL10
- E-PM1
- E-PM2
- E-M1
- E-M1 Mark II
- E-M1 Mark III
- E-M1X
- E-M10
- E-M10 Mark II
- E-M10 Mark III
- E-M10 Mark IV
- E-M5
- E-M5 Mark II
- E-M5 Mark III
- Pen-F
- SP-310
- SP-320
- SP-350
- SP-500UZ
- SP-510UZ
- SP-550UZ
- SP-560UZ
- SP-565UZ
- SP-570UZ
- Stylus 1
- Stylus 1s
- SH-2
- SH-3
- TG-4
- TG-5
- TG-6
- TG-7
- XZ-1
- XZ-2
- XZ-10
- OmniVision
 - 4688
 - OV5647
 - OV5648
 - OV8850
 - 13860
- OnePlus
 - 6 (A6003)
 - 6T
 - 7 Pro (GM1913)

- 8 Pro (IN2023)
- One
- A3303
- A5000
- PARROT
 - Anafi
 - Bebop 2
 - Bebop Drone
- Panasonic
 - DMC-CM1
 - DMC-FZ8
 - DMC-FZ18
 - DMC-FZ28
 - DMC-FZ30
 - DMC-FZ35 / FZ38
 - DMC-FZ40 / FZ42 / FZ45
 - DMC-FZ50
 - DMC-FZ70 / FZ72
 - DC-FZ80 / FZ81 / FZ82 / FZ83 / FZ85
 - DMC-FZ100
 - DMC-FZ150
 - DMC-FZ200
 - DMC-FZ300 / FZ330
 - DMC-FZ1000
 - DC-FZ1000 II / FZ1000M2 / DC-FZ10002
 - DMC-FZ2000 / FZ2500 / FZH1
 - DMC-FX150 / FX180
 - DMC-G1
 - DMC-G10
 - DMC-G2
 - DMC-G3
 - DMC-G5
 - DMC-G6
 - DMC-G7 / G70
 - DMC-G8 / G80 / G81 / G85
 - DC-G9
 - DC-G9 Mark II
 - DC-G90 / G95 / G91 / G99/ G97/ G95D/ G99D/ G99M2
 - DC-G100 / G110/ G110D
 - DMC-GF1
 - DMC-GF2
 - DMC-GF3
 - DMC-GF5
 - DMC-GF6
 - DMC-GF7
 - DC-GF10 / GF90
 - DMC-GH1
 - DMC-GH2
 - DMC-GH3

- DMC-GH4
- AG-GH4
- DC-GH5
- DC-GH5S
- DC-GH5 Mark II
- DC-GH6
- DC-GH7
- DMC-GM1
- DMC-GM1s
- DMC-GM5
- DMC-GX1
- DMC-GX7
- DMC-GX8
- DC-GX9 / GX7mkIII
- DMC-GX80 / GX85, DMC-GX7mkII
- DC-GX800 / GX850, DC-GF9
- DMC-L1
- DMC-L10
- DMC-LC1
- DMC-LF1
- DMC-LX1
- DMC-LX2
- DMC-LX3
- DMC-LX5
- DMC-LX7
- DMC-LX9 / LX10 / LX15
- DMC-LX100
- DC-LX100M2
- DC-S1
- DC-S1 II (DC-S1M2)
- DC-S1 IIE (DC-S1M2ES)
- DC-S1H
- DC-S1R
- DC-S1R MkII
- DC-S5
- DC-S5 MkII/S5 MkII(X)
- DC-S9
- DMC-ZS40, DMC-TZ60 / TZ61
- DMC-ZS50, DMC-TZ70 / TZ71
- DMC-ZS60, DMC-TZ80 / TZ81 / TZ82 / TZ85
- DC-ZS70, DC-TZ90 / TZ91 / TZ92 / TZ93
- DC-ZS80, DC-TZ95 / TZ96 / TZ97/ ZS80D/ TZ95D/ TX96D/ ZS99/ TZ99
- DMC-ZS100 / ZS110, DMC-TZ100 / TZ101 / TZ110, DMC-TX1
- DC-ZS200 / ZS220, DC-TZ200 / TZ202 / TZ220, DC-TX2
- DC-ZS200D / ZS220D, DC-TZ200D / TZ202D / TZ220D
- Pentax
 - *ist D
 - *ist DL
 - *ist DL2

RawDigger User Guide

- *ist DS
- *ist DS2
- K10D
- K20D
- K100D
- K100D Super
- K110D
- K200D
- K2000/K-m
- KF
- KP
- K-x
- K-r
- K-01
- K-1
- K-1 Mark II
- K-3
- K-3 Mark II
- K-3 Mark III
- K-3 Mark III Monochrome
- K-30
- K-5
- K-5 II
- K-5 IIs
- K-50
- K-500
- K-7
- K-70
- K-S1
- K-S2
- MX-1
- Q
- Q7
- Q10
- QS-1
- Optio S (secret menu or hack)
- Optio S4 (secret menu or hack)
- Optio 33WR (secret menu or hack)
- Optio 750Z (secret menu or hack)
- 645D
- 645Z
- PhaseOne
 - IQ140
 - IQ150
 - IQ160
 - IQ180
 - IQ180 IR
 - IQ250
 - IQ260

RawDigger User Guide

- IQ260 Achromatic
- IQ280
- IQ3 50MP
- IQ3 60MP
- IQ3 80MP
- IQ3 100MP
- IQ3 100MP Trichromatic
- IQ4 150MP
- LightPhase
- Achromatic+
- H 10
- H 20
- H 25
- P 20
- P 20+
- P 21
- P 25
- P 25+
- P 30
- P 30+
- P 40+
- P 45
- P 45+
- P 65
- P 65+
- Photron BC2-HD
- Pixelink A782
- Polaroid x530
- PtGrey GRAS-50S5C
- RaspberryPi
 - Camera
 - Camera V2
 - HQ Camera
- Realme 3 Pro
- Ricoh
 - GR
 - GR II
 - GR III
 - GR IIIx
 - GR IV
 - GR Digital
 - GR Digital II
 - GR Digital III
 - GR Digital IV
 - Caplio GX100
 - Caplio GX200
 - GXR Mount A12
 - GXR GR Lens A12 50mm F2.5 Macro
 - GXR GR Lens A12 28mm F2.5

- GXR Ricoh Lens A16 24-85mm F3.5-5.5
- GXR Ricoh Lens S10 24-72mm F2.5-4.4 VC
- GXR Ricoh Lens P10 28-300 mm F3.5-5.6 VC
- Rollei d530flex
- RoverShot 3320af
- SMaL
 - Ultra-Pocket 3
 - Ultra-Pocket 4
 - Ultra-Pocket 5
- STV680 VGA
- SVS SVS625CL
- Samsung
 - EX1 / TL500
 - EX2F
 - GX-1L
 - GX-1S
 - GX10
 - GX20
 - Galaxy Nexus
 - Galaxy Note 9
 - Galaxy NX (EK-GN120)
 - Galaxy S3
 - Galaxy S6 (SM-G920F)
 - Galaxy S7
 - Galaxy S7 Edge
 - Galaxy S8 (SM-G950U)
 - Galaxy S9 (SM-G960F)
 - Galaxy S9+ (SM-G965U / 965F)
 - Galaxy S10 (SM-G973F)
 - Galaxy S10+ (SM-G975U)
 - Galaxy S22 Ultra (SM-S908B)
 - Galaxy S23+
 - Galaxy S23 Ultra
 - NX1
 - NX5
 - NX10
 - NX11
 - NX100
 - NX1000
 - NX1100
 - NX20
 - NX200
 - NX210
 - NX2000
 - NX30
 - NX300
 - NX300M
 - NX3000
 - NX500

RawDigger User Guide

- NX mini / NXF1
- Pro815
- WB550 / WB560 / HZ15W
- WB2000 / TL350
- WB5000 / HZ25W
- S85 (hacked)
- S850 (hacked)
- Sarnoff 4096x5440
- Seitz
 - 6x17
 - Roundshot D3
 - Roundshot D2X
 - Roundshot D2Xs
- Sigma
 - BF
 - fp
 - fp L
 - SD9 (raw decode only)
 - SD10 (raw decode only)
 - SD14 (raw decode only)
 - SD15 (raw decode only)
 - SD1
 - SD1 Merrill
 - DP1
 - DP1 Merrill
 - DP1S
 - DP1X
 - DP2
 - DP2 Merrill
 - DP2S
 - DP2X
 - DP3 Merrill
 - dp0 Quattro
 - dp1 Quattro
 - dp2 Quattro
 - dp3 Quattro
 - sd Quattro
 - sd Quattro H
- Sinar
 - eMotion 22
 - eMotion 54
 - eSpirit 65
 - eMotion 75
 - eVolution 75
 - 3072x2048 (Sinarback 23)
 - 4080x4080 (Sinarback 44)
 - 4080x5440
 - STI format
 - Sinarback 54

- Skydio 2+
- Sony
 - ILCE-1 (A1)
 - ILCE-1M2 (A1 II)
 - ILCE-7 (A7)
 - ILCE-7M2 (A7 II)
 - ILCE-7M3 (A7 III)
 - ILCE-7M4 (A7 IV)
 - ILCE-7M5 (A7 V) (Lossless compression only)
 - ILCE-7C (A7C)
 - ILCE-7CR (A7CR)
 - ILCE-7CM2 (A7C II)
 - ILCE-7R (A7R)
 - ILCE-7RM2 (A7R II)
 - ILCE-7RM3 (A7R III)
 - ILCE-7RM3A (A7R IIIA)
 - ILCE-7RM4 (A7R IV)
 - ILCE-7RM4A (A7R IVA)
 - ILCE-7RM5 (A7R V)
 - ILCE-7S (A7S)
 - ILCE-7SM2 (A7S II)
 - ILCE-7SM3 (A7S III)
 - ILCE-9 (A9)
 - ILCE-9M2 (A9 II)
 - ILCE-9M3 (A9 III)
 - ILCA-68 (A68)
 - ILCA-77M2 (A77-II)
 - ILCA-99M2 (A99-II)
 - ILCE-3000 / 3500
 - ILCE-5000
 - ILCE-5100
 - ILCE-6000
 - ILCE-6100
 - ILCE-6100A
 - ILCE-6300
 - ILCE-6400
 - ILCE-6400A
 - ILCE-6500
 - ILCE-6600
 - ILCE-6700
 - ILCE-QX1 / UMC-R10C
 - ILME-FX2
 - ILX-LR1
 - DSC-F828
 - DSC-HX95
 - DSC-HX99
 - DSC-R1
 - DSC-RX0
 - DSC-RX0 II

- DSC-RX1
- DSC-RX1R
- DSC-RX1R II
- DSC-RX1R III
- DSC-RX10
- DSC-RX10 II
- DSC-RX10 III
- DSC-RX10 IV
- DSC-RX100
- DSC-RX100 II
- DSC-RX100 III
- DSC-RX100 IV
- DSC-RX100 V
- DSC-RX100 VA
- DSC-RX100 VI
- DSC-RX100 VII
- DSC-RX100 VIIA
- DSC-V3
- DSLR-A100
- DSLR-A200
- DSLR-A230
- DSLR-A290
- DSLR-A300
- DSLR-A330
- DSLR-A350
- DSLR-A380 / A390
- DSLR-A450
- DSLR-A500
- DSLR-A550
- DSLR-A560
- DSLR-A580
- DSLR-A700
- DSLR-A850
- DSLR-A900
- NEX-3
- NEX-3N
- NEX-5
- NEX-5N
- NEX-5R
- NEX-5T
- NEX-6
- NEX-7
- NEX-C3
- NEX-F3
- NEX-VG20
- NEX-VG30
- NEX-VG900
- SLT-A33
- SLT-A35

RawDigger User Guide

- SLT-A37
- SLT-A55(V)
- SLT-A57
- SLT-A58
- SLT-A65(V)
- SLT-A77(V)
- SLT-A99(V)
- XCD-SX910CR
- IMX135-mipi 13mp
- IMX135-QCOM
- IMX072-mipi
- IMX214
- IMX219
- IMX230
- IMX298-mipi 16mp
- IMX219-mipi 8mp
- Xperia 5 II (XQ-AS52)
- Xperia L
- Xperia 1 III
- Xperia 1 IV (XQ-CT54)
- ZV-1 (DCZV1/B)
- ZV-1M2
- ZV-E1
- ZV-E10
- ZV-E10 II
- Vivo X51 5G (V2006)
- Xiaomi
 - 12S Ultra (2203121C)
 - 13 Pro (2210132G)
 - 15 Ultra (25010PN30G)
 - MI3
 - MI 8
 - MI 9 Lite
 - MI MAX
 - POCO M3
 - Redmi Note3 Pro
 - Redmi Note7
 - Redmi Note 8T
 - FIMI X8SE
- Xiaoyi YIAC3 (YI 4k)
- YUNEEC
 - CGO3
 - CGO3P
 - CGO4
- Yi M1
- Zeiss ZX1
- Zenit M

Copyrights and Acknowledgments

RawDigger uses Qt 5.12 (v4.8.6 for legacy version), LibRaw library, RawSpeed library, LibXML2 and LibJPEG-turbo libraries, and Microsoft Visual Studio runtime library.

The program includes **ExifTool** utility.

All trademarks mentioned in this manual are the property of their owners.

ExifTool

Copyright 2003-2019, Phil Harvey

This is free software; you can redistribute it and/or modify it under the same terms as Perl itself.

ExifTool is used in accordance with Perl Artistic License, please see `exiftool-artistic-license.html` file in the program directory.

LibRaw

LibRaw: raw images processing library

Copyright (C) 2008-2019 LibRaw LLC (<http://www.libraw.org>, info@libraw.org)

Qt 5.12

Copyright (C) 2016 The Qt Company Ltd.

Contact: <https://www.qt.io/licensing/>

Qt library is used under the terms of GNU LESSER GENERAL PUBLIC LICENSE 2.1, see file `LICENSE.LGPL` in the RawDigger program directory.

Qt 4.8

Copyright (C) 2014 Digia Plc and/or its subsidiary(-ies).

Contact: <http://www.qt-project.org/legal>

Qt library is used under the terms of GNU LESSER GENERAL PUBLIC LICENSE 2.1, see file `LICENSE.LGPL` in the RawDigger program directory.

Qt uses a number of freeware libraries; their list and copyrights are contained in file `QT-Third-Party-Licenses.rtf` LGPL in the RawDigger program directory.

RawSpeed library

RawSpeed - RAW file decoder.

Copyright (C) 2009 Klaus Post

This library is free software; you can redistribute it and/or modify it under the terms of the GNU Lesser General Public License as published by the Free Software Foundation; either version 2 of the License, or (at your option) any later version.

RawDigger User Guide

This library is distributed in the hope that it will be useful, but WITHOUT ANY WARRANTY; without even the implied warranty of MERCHANTABILITY or FITNESS FOR A PARTICULAR PURPOSE. See the GNU Lesser General Public License for more details.

LibJPEG-turbo

Copyright 2009 Pierre Ossman <ossman@cendio.se> for Cendio AB

Copyright 2010 D. R. Commander

Based on x86 SIMD extension for IJG JPEG library - version 1.02

Copyright (C) 1999-2006, MIYASAKA Masaru.

This software is provided 'as-is', without any express or implied warranty. In no event will the authors be held liable for any damages arising from the use of this software. Permission is granted to anyone to use this software for any purpose, including commercial applications, and to alter it and redistribute it freely, subject to the following restrictions:

1. The origin of this software must not be misrepresented; you must not claim that you wrote the original software. If you use this software in a product, an acknowledgment in the product documentation would be appreciated but is not required.
2. Altered source versions must be plainly marked as such, and must not be misrepresented as being the original software.
3. This notice may not be removed or altered from any source distribution.

LibTIFF

Copyright (c) 1988-1997 Sam Leffler

Copyright (c) 1991-1997 Silicon Graphics, Inc.

Permission to use, copy, modify, distribute, and sell this software and its documentation for any purpose is hereby granted without fee, provided that (i) the above copyright notices and this permission notice appear in all copies of the software and related documentation, and (ii) the names of Sam Leffler and Silicon Graphics may not be used in any advertising or publicity relating to the software without the specific, prior written permission of Sam Leffler and Silicon Graphics.

THE SOFTWARE IS PROVIDED "AS-IS" AND WITHOUT WARRANTY OF ANY KIND, EXPRESS, IMPLIED OR OTHERWISE, INCLUDING WITHOUT LIMITATION, ANY WARRANTY OF MERCHANTABILITY OR FITNESS FOR A PARTICULAR PURPOSE.

IN NO EVENT SHALL SAM LEFFLER OR SILICON GRAPHICS BE LIABLE FOR ANY SPECIAL, INCIDENTAL, INDIRECT OR CONSEQUENTIAL DAMAGES OF ANY KIND, OR ANY DAMAGES WHATSOEVER RESULTING FROM LOSS OF USE, DATA OR PROFITS, WHETHER OR NOT ADVISED OF THE POSSIBILITY OF DAMAGE, AND ON ANY THEORY OF LIABILITY, ARISING OUT OF OR IN CONNECTION WITH THE USE OR PERFORMANCE OF THIS SOFTWARE.

LibJPEG

The Independent JPEG Group's JPEG software

This distribution contains a release of the Independent JPEG Group's free JPEG software. You are welcome to redistribute this software and to use it for any purpose, subject to the conditions under LEGAL ISSUES, below.

This software is the work of Tom Lane, Guido Vollbeding, Philip Gladstone, Bill Allombert, Jim Boucher, Lee Crocker, Bob Friesenhahn, Ben Jackson, Julian Minguillon, Luis Ortiz, George Phillips, Davide Rossi, Ge' Weijers, and other members of the Independent JPEG Group.

IJG is not affiliated with the official ISO JPEG standards committee.

LibXML2

Copyright (C) 1998-2003 Daniel Veillard. All Rights Reserved.

Permission is hereby granted, free of charge, to any person obtaining a copy of this software and associated documentation files (the "Software"), to deal in the Software without restriction, including without limitation the rights to use, copy, modify, merge, publish, distribute, sublicense, and/or sell copies of the Software, and to permit persons to whom the Software is furnished to do so, subject to the following conditions:

The above copyright notice and this permission notice shall be included in all copies or substantial portions of the Software.

THE SOFTWARE IS PROVIDED "AS IS", WITHOUT WARRANTY OF ANY KIND, EXPRESS OR IMPLIED, INCLUDING BUT NOT LIMITED TO THE WARRANTIES OF MERCHANTABILITY, FITNESS FOR A PARTICULAR PURPOSE AND NONINFRINGEMENT. IN NO EVENT SHALL THE DANIEL VEILLARD BE LIABLE FOR ANY CLAIM, DAMAGES OR OTHER LIABILITY, WHETHER IN AN ACTION OF CONTRACT, TORT OR OTHERWISE, ARISING FROM, OUT OF OR IN CONNECTION WITH THE SOFTWARE OR THE USE OR OTHER DEALINGS IN THE SOFTWARE.

Except as contained in this notice, the name of Daniel Veillard shall not be used in advertising or otherwise to promote the sale, use or other dealings in this Software without prior written authorization from him.

MICROSOFT VISUAL C++ 2010 RUNTIME LIBRARIES

Copyright 2010 Microsoft Corp.

Microsoft runtime libraries are distributed under the terms described in file MSVC-Runtime-EULA.rtf in the RawDigger program directory.